

Mansion Rotation Update: Adam Dressing Room

On view: October 6, 2025-January 2026

On Monday, October 6, the collections and curatorial team will remove pieces from Princess Irina Paley's traveling dressing table set (pictured below) in the Adam dressing room. The objects will be replaced with new acquisitions of a hat and pin. For more information, please see the updated label text and newly installed objects below. Thumbnail images included here are for reference only and do not appear on labels unless otherwise noted.

Objects Being Removed



Pieces from Princess Irina Paley's traveling dressing table set

Pinteaux, silversmith (French, active 1906–after 1925)

Paris, ca. 1923

Silver, crystal

Museum purchase, 2022 (2022.2.7.1–5)

Adam Dressing Room

New Acquisitions



Hat with matching hatpin

Germaine Vittu (American, born France, active 1930s–1940s)

New York, ca. 1948

Silk velvet

Gift of Renée Melzer, 2025 (2025.16.1–2)



Pin

Cartier (French, 1847–present)

Paris, 1904–14

Gold, enamel

Gift of Michael Romanoff Ilyinsky, 2025 (2025.15)

Since the June 2025 opening of *From Exile to Avant-Garde: The Life of Princess Natalie Paley*, special objects that belonged to Paley and her family have emerged as generous donations from private collectors and are now part of Hillwood's permanent collection. They include a hat and a gold pin.



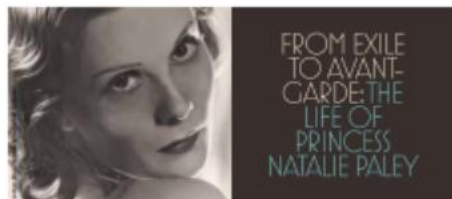
[Image on label]

The overflowing hat rack at Pebbles, 1956.

John C. Wilson Papers. Yale Collection of American Literature, Beinecke Rare Book and Manuscript Library

The scalloped silk velvet skullcap with its coordinating hatpin is a welcome addition to the story of Paley as a prominent player in New York's fashion scene beginning in the late 1930s. She was a dedicated hat wearer, cheekily teased by husband John C. Wilson for her overflowing hat rack at their Connecticut home, Pebbles, as seen on the image here. Her favorite hatmakers included French milliner Caroline Reboux and later the New York-based Germaine Vittu. The custom milliner originally worked as a designer and buyer for the department store Wanamaker's, in its French hat salon. In May 1936, she and another former Wanamaker employee established a shared salon on Madison Avenue, close to Cartier on the next block.

The pin by Cartier dates to the early 1900s when Paley's family lived in exile in Paris. The beautiful and modern-looking pin bears the monogram of Natalie's father, Grand Duke Paul Alexandrovich of Russia.



(Image is on label)