

Jewelry Case Installation

On View: September 18, 2023-January 13, 2024

Marjorie Post's Bedroom Suite Closet

Marjorie Post was one of Cartier's most dedicated clients during the 1920s and beyond. She appreciated the firm's finesse for merging historical elements with exquisite, innovative materials and craftsmanship. The pendant brooch at the center exemplifies this tradition. The brooch's historic emerald is engraved with an inscription referencing its previous owner, a servant of Shah Abbas II (r. 1642–66) of Persia who probably received it as a gift or plunder from the Mughals.

Post often mined her collection for dramatic precious stones that she then provided to jewelers for commissions. In 1936, she instructed Cartier to combine two of her sapphire and diamond bracelets to create the necklace on the left. To great effect, the firm designed a necklace of cascading diamonds surrounding a bold centerpiece—a large, 40-carat cushion cut Burmese sapphire—which could be detached and worn separately as a brooch. The resulting design showcases a new classicism and restraint yet manages to remain imposing in character.

Post commissioned Cartier New York in 1936 to create this impressive arrow-shaped clasp with dangling tassels of diamonds for her magnificent strands of pearls, seen here on the right with their 1963 replacement pearls. Clasps like this one paired beautifully with the low-cut backs of 1930s evening gowns.

Ever the connoisseur, Post added to her parures, or suites, of complimentary pieces throughout her life. Her acquisitions of these glimmering earrings from Van Cleef & Arpels and magnificent brooch and ring from Harry Winston emphasized her statement pieces.



*Post wearing her sapphire and diamond necklace, 1940s
Hillwood Estate Museum & Gardens Archives*

(Following Images Not on Label)

Left Panel



Earrings

Van Cleef & Arpels (French, 1906–present), attributed
Paris, mid-1930s; altered, 1950s
Sapphires, diamonds, platinum

Gift of Nina Rumbough (2021.6.6.1–2)



Necklace

Cartier (French, 1847–present)

New York, 1937

Sapphires, diamonds, platinum

Bequest of Marjorie Merriweather Post, 1973 (17.68)

Center Panel



Pendant brooch

Cartier (French, 1847–present)

London, 1923; purchased, New York, 1925;

remounted, 1928

Emeralds, diamonds, platinum, enamel

Bequest of Marjorie Merriweather Post, 1973 (17.75)



Ring

Harry Winston (American, 1932–present)

New York, 1966

Emerald, diamonds, platinum

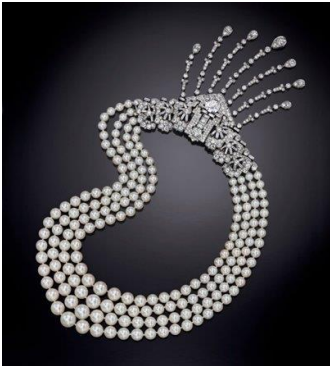
Bequest of Marjorie Merriweather Post, 1973 (17.78)

Right Panel



Earrings

Van Cleef & Arpels (French, 1906–present)
New York, 1948
Briolette diamonds, platinum
Bequest of Marjorie Merriweather Post, 1973
(17.77.1–2)



Necklace

Cartier (French, 1847–present): clasp
Caro Yamaoka (American, 1911–1991): necklace
New York, 1936: clasp
New York, 1963: necklace
Diamonds, platinum: clasp
Pearls: necklace
Bequest of Marjorie Merriweather Post, 1973 (17.69)



Brooch

Harry Winston (American, 1932–present)
New York, 1959
Diamonds, platinum
Bequest of Marjorie Merriweather Post, 1973 (17.76)