

# The Cutting Garden



# The Cutting Garden

- Design
- History and Mrs. Post
- The Garden Today
  - Features
  - Plants
  - Annual Chores
- Estate Greenhouse



# The Cutting Garden



Bird's eye



Feed

# Design – Working, Functional Garden

Goal: Maximize Production - Straight, narrow beds and paths



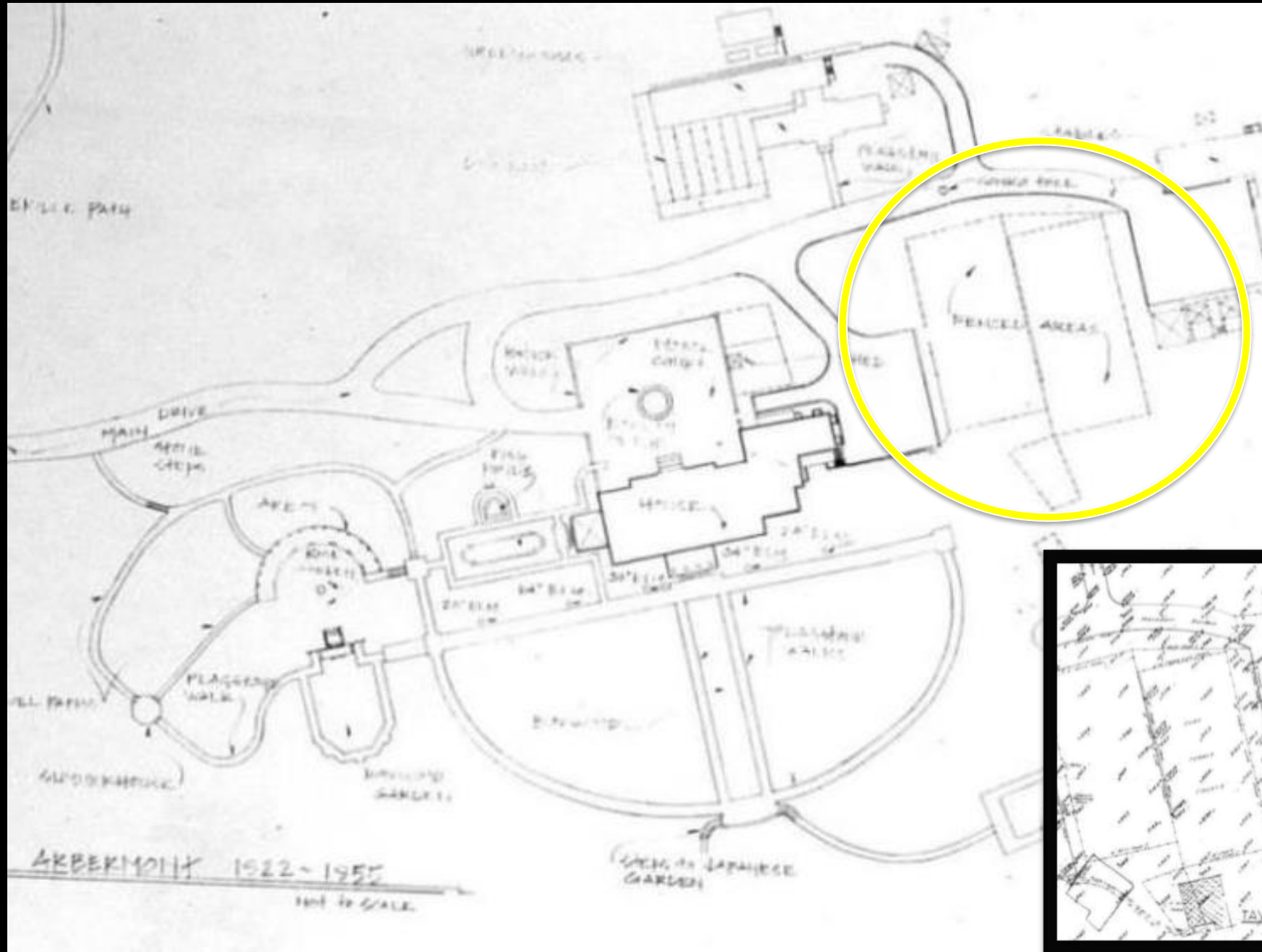


# Herb Garden



Tarragon  
Sage  
Chives  
Garlic chives  
Lavender  
Thyme  
Oregano  
Rosemary  
Parsley  
Basil Dill  
Borage  
Cilantro

# History - Arbermont Tennis Courts

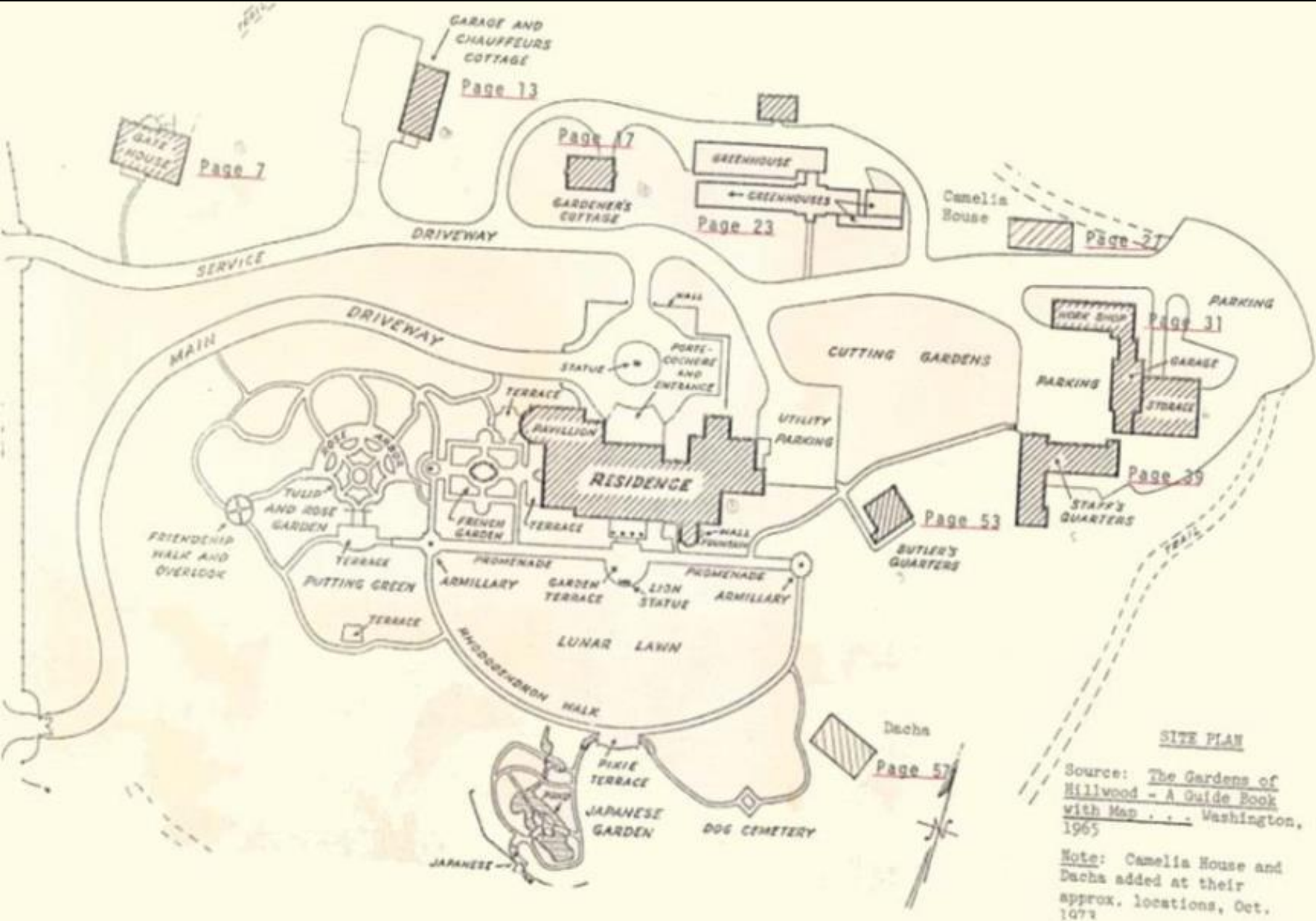


Late 1950's



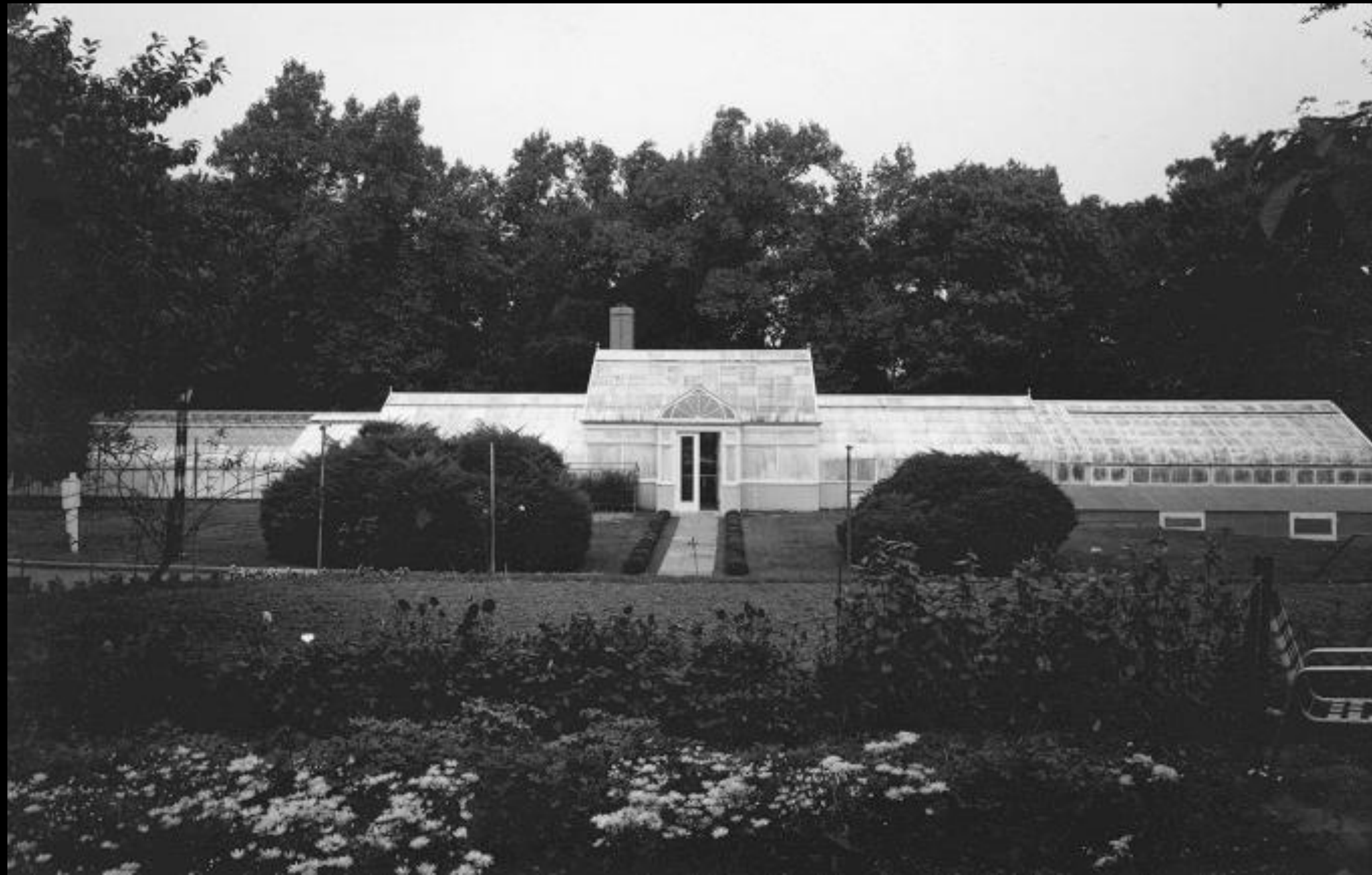


# 1965 – Cutting Garden and Service Area of Property





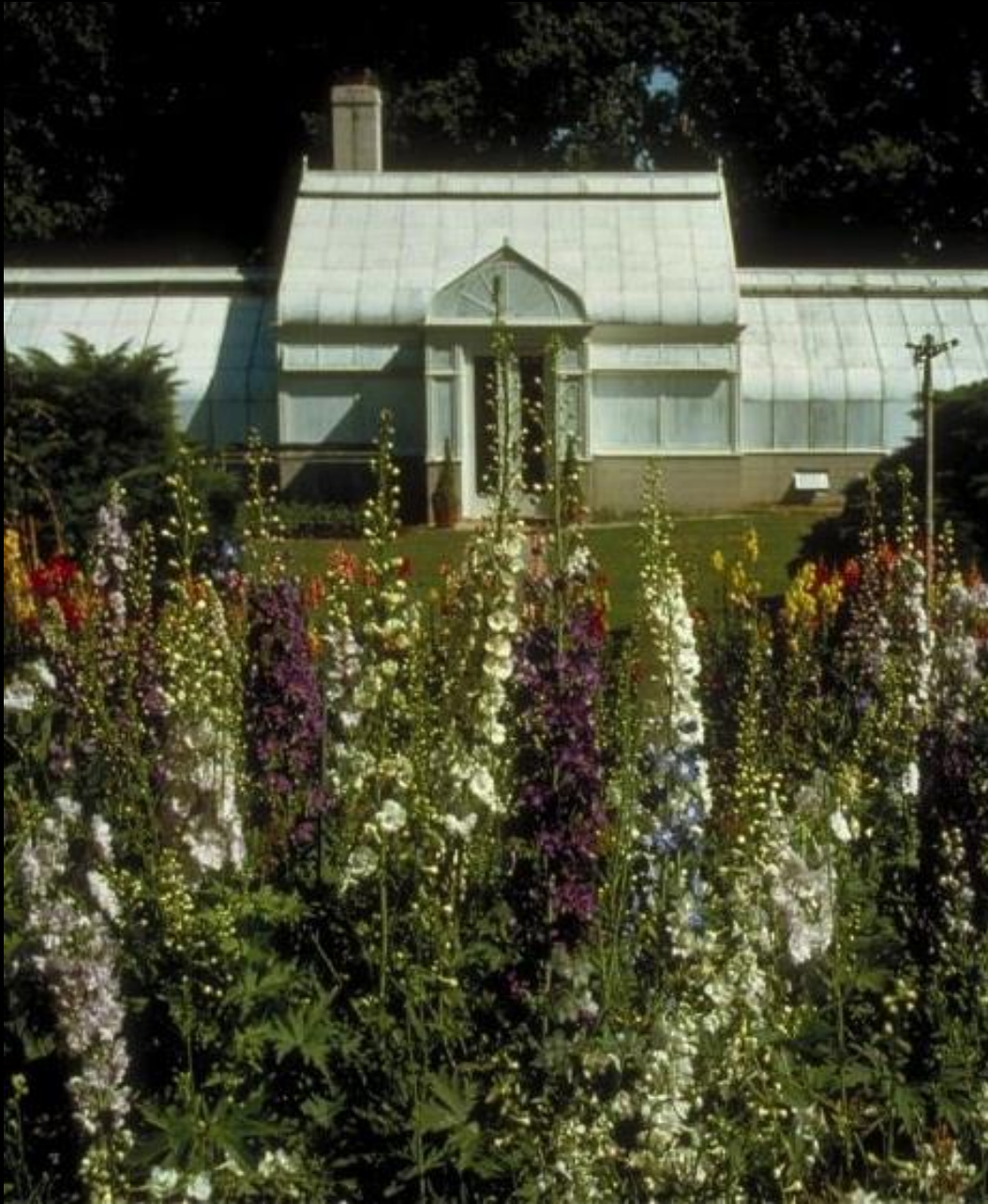
1960's



1960's



1960



Today



Early 1970's



# 1980's



# 1995 – Phase 1 Renovations

-Irrigation, Hardscape, Electrical, ADA Compliance





1996



# Greenhouse Renovations 1995-1996



# Cutting Garden Today



## Features: Flagstone Paths and Patio



# The Plants

- Plant Resource Guide
  - *Davidia involucrata*
  - *Ilex* 'Nellie Stevens'
  - *Malus* 'Harvest Gold'
  - *Ginkgo biloba*
  - *Chamaecyparis obtusa* 'Crippsii'
  - *Kolkwitzia amabilis*
  - *Syringa reticulata*
  - *Paulownia tomentosa*
- Roses
- Cut Flowers
- Herb Garden
- Seasonal Display



*Ginkgo biloba* - Ginkgo



*Chamaecyparis obtusa* 'Crippsii' – Hinoki Falsecypress



*Kolkwitzia amabilis* - Beautybush





*Paulownia tomentosa* - Empress tree



Rose 'Golden Showers' and 'Blaze' - Climbing



Rose 'Royal Bonica' - Shrub



Rose 'Europeana' - Floribunda



Rose 'Earthsong' - Grandiflora



How many different cut flowers in the Cutting Garden?

-an ever-growing list of 300+ cultivars of annuals, perennials and bulbs  
+ shade cutting garden and shrubs throughout property



# Traditional Annuals



Dahlia 'Café au Lait'



Cosmos 'Tall Orange'



Love-in-a-Puff Vine



Scabiosa 'QIS Blue'

# Self-sowing annuals



Nigella



Larkspur



Bupleurum



# Perennials



Yarrow



Globe Thistle



Crocosmia



# Bulbs – Daffodils, Tulips, Allium



*Amaranthus caudatus* – Love Lies Bleeding





# Celosia (cristata, plumosa, spicata forms) – Cockscomb



# *Nepeta* 'Walker's Low' - Catmint



# *Eustoma* - Lisianthus



# *Gomphocarpus (Asclepias) physocarpus* – Balloon Plant



Swan Milkweed  
Oscar Plant  
Balloon Plant  
Cotton Bush  
Family Jewels





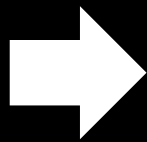


















# Helpful Information

- Plant list located in garden in weatherproof box
- Netting – Hortinova Trellis Netting – support stems
- ‘Gardener Focus’ tours offered to public in July



# The Estate Greenhouse and cold frames





# The Estate Greenhouse



# Specialty Chrysanthemums



Late 1960's



Today

# Winter Cut Flower Production



# Crop Production - Spring display, Summer display, Cutting Garden plants



	A	B	C	D	E	F	G	H	I	J	K	L	M	N
		Final Qty Needed	Final Qty Trays	Final pot size	#PPP	Seed or Plug	Sow/ Arrival Date	Cover Seed?	Source	Qty ordered (#plugs)	Actual date sown	Notes		
1														
2														
3														
4														
5														
6														
7														
8														
9														
10														
11														
12														
13														
14														
15														
16														
17														
18														
19														
20														
21														
22														
23														
24														
25														
26														
27														
28														
29														
30														



# Cold frames



# Estate House 'Gardener Focus' Tours – 'Preparing for Spring' and 'Specialty Mums'



# Takeaway

- Working, functional garden
  - Production of cut flowers
- Year-round production
  - Estate greenhouse in winter
- Labor intensive
  - 30 volunteers for production zones
- Nearly all the flowers for arrangements are grown at Hillwood June through November. Additional flowers are purchased during winter and early spring.



# Orchids – A Collector's Passion

- History
- Hillwood Collection
- Greenhouse Features





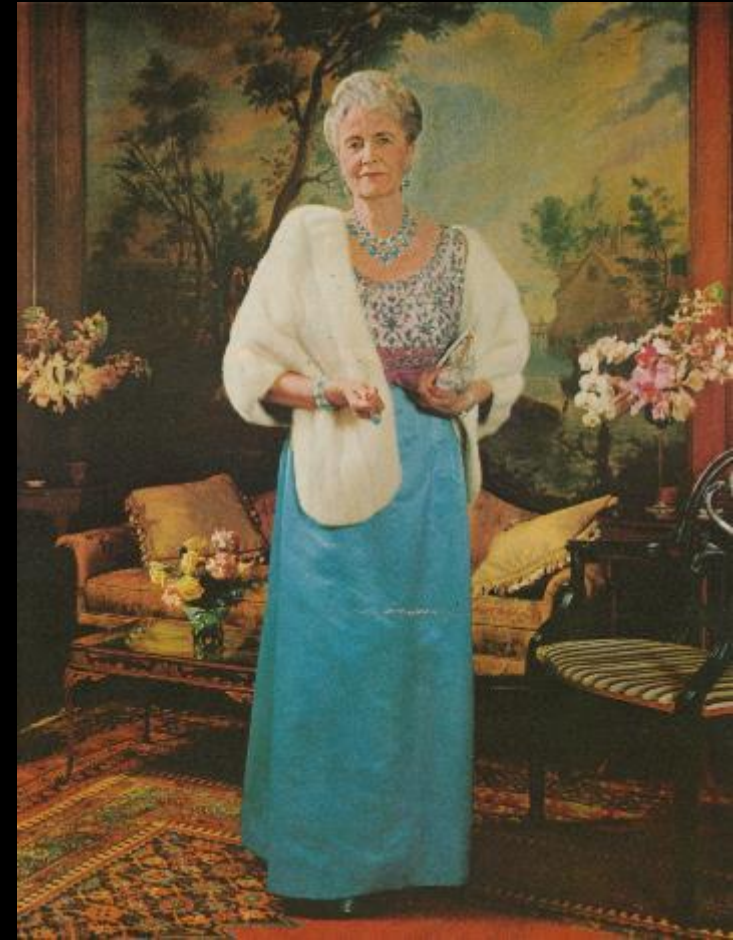
Dec. 15, 1935 - Marriage to Joseph Davies







Time Life feature article - Nov 5 1965







# MMP's Orchid Operation

- One greenhouse existing in 1955
- Four additional greenhouses built
- 2000 orchids
- Full-time orchid staff
- Shipped orchids to other estates
- The Cattleya was her favorite



The greenhouses are to be maintained at the level characteristic of the period of the signing of this document for the benefit of the museum and the grounds of Hillwood exclusively. Fresh flowers are to be kept in Hillwood at all times as has been true in the decade, 1957-1967.

AMERICAN ORCHID SOCIETY, INC.

MERRITT W. HUNTINGTON  
PRESIDENT  
RAYMOND S. McEFLUGH  
EXECUTIVE VICE PRESIDENT  
JOE T. MEADOR  
VICE PRESIDENT  
WILLIAM R. FARRILL  
VICE PRESIDENT  
EDMUND A. STAUB  
TREASURER  
D. WESLEY DAVIDSON  
SECRETARY

FROM THE OFFICE OF

Merritt W. Huntington  
3301 Plyers Mill Road  
Kensington, Maryland 20795  
July 28, 1975

Mr. Michael F. Curtin  
McNutt, Dudley, Easterwood & Losch  
Barr Building  
Washington, D.C. 20006

Dear Mr. Curtin:

I have completed the appraisal of the "Hillwood Orchid Collection". I delivered, on July 21, 1975, to Dr. Richard Howland at Hillwood, the work sheets and covering letter.

The Hillwood collection contains the following Orchid plants and their value as of July 21, 1975:

92 - Phalaenopsis	\$ 1162.50
850 - Cattleya	20917.00
43 - Miltonia	912.50
200 - Paphiopedilum (Cypripedium)	5542.50
510 - Species and Botanicals	8517.50
250 - Cymbidiums	8010.00
	<u>4 45062.00</u>

A total of 1945 Orchids with a value of \$45,062.

The Hillwood collection is indeed a fine collection of Orchid plants. Many were of exceptional size and vigor. I did not realize when I first discussed this appraisal with you, the size and numbers involved with the Hillwood collection. The inspection, inventory and appraisal of these plants took me approximately twenty-five hours. My statement is enclosed.

If you have any questions regarding the appraisal, please call upon me.

Sincerely,



Merritt W. Huntington

MWH:w  
Enc. 2



1975

Cattleya: 850  
Cymbidium: 250  
Miltonia: 43  
Phalaenopsis: 92  
Paphiopedalum: 200  
Species & Botanicals: 510

**TOTAL: 1,945**

2015

Cattleya: 779  
Cymbidium: 198  
Dendrobium: 84  
Phalaenopsis: 108  
Paphiopedalum: 178  
Misc.: 662

**TOTAL: 2,009**

Today



The Greenhouse – A set of 5 ‘working’ greenhouses open to the public

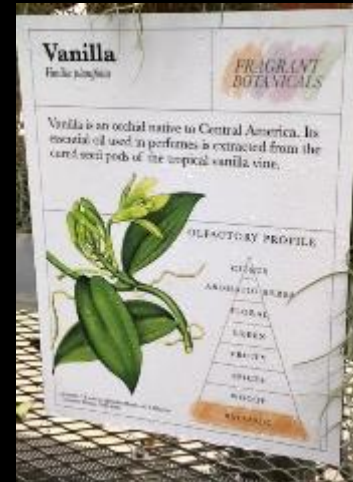








# Fragrant Botanicals Display



- Black Pepper
- Cinnamon
- Gardenia
- Heliotrope
- Jasmine
- Lavender
- Orange tree
- Patchouli
- Peppermint
- Provence Rose
- Geranium
- Rosemary
- Vanilla

# March - Orchid Month – Workshops and Tours





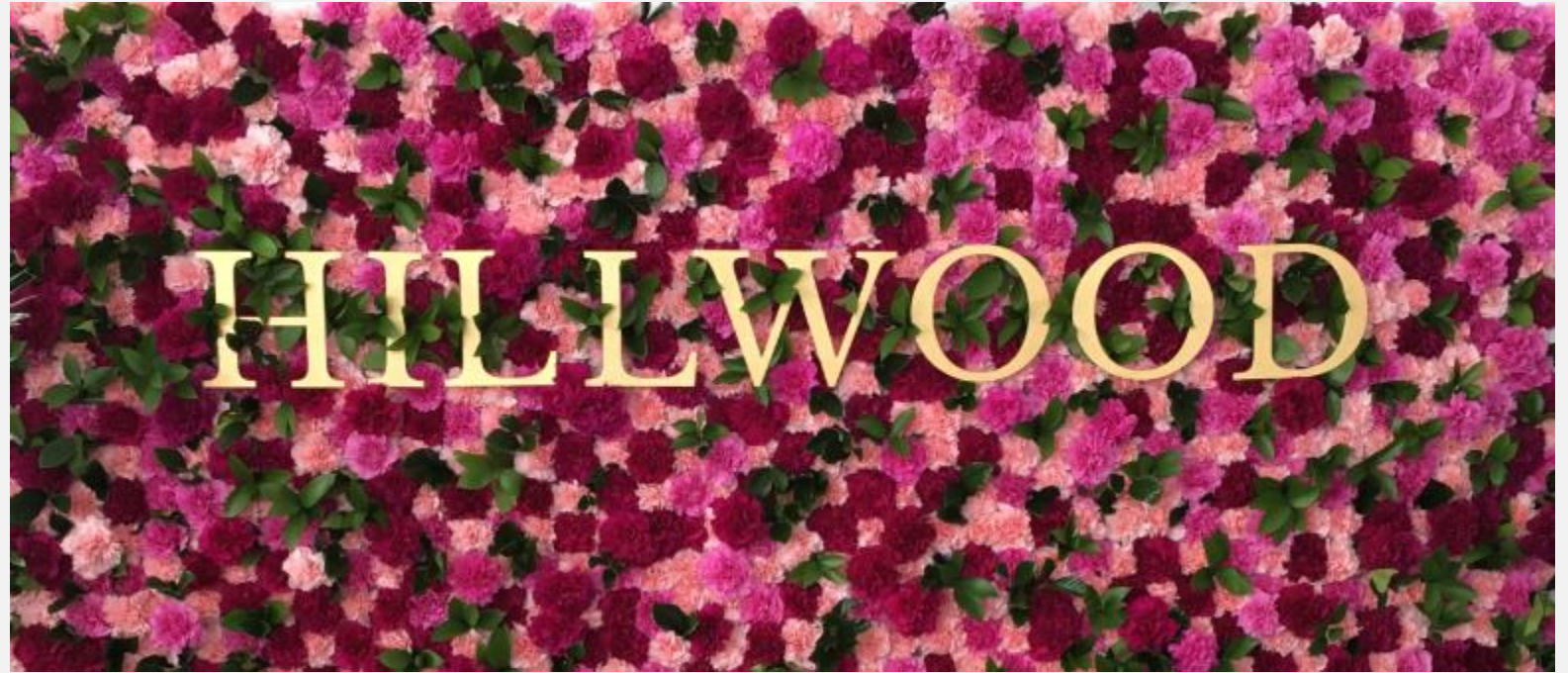
# Orchid collection staff and volunteers



Why do we have floral design at Hillwood?

What is the historical context of floral design at Hillwood?

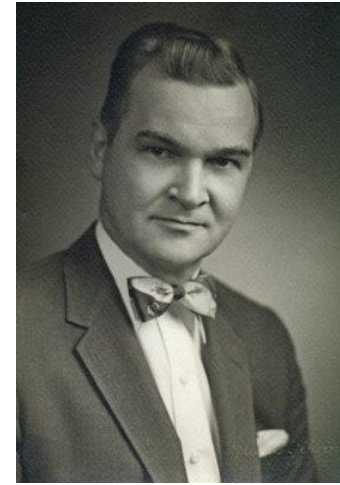
What is happening with floral design at Hillwood today?



The greenhouses are to be maintained at the level characteristic of the period of the signing of this document for the benefit of the museum and the grounds of Hillwood exclusively. Fresh flowers are to be kept in Hillwood at all times as has been true in the decade, 1957-1967.

# Historical Context

- Lewis Potter
- Earl Loy
- Everyday arrangements
- Special event arrangements
- Flowers from the cutting garden and orchid house



# Floral arrangements in the mansion

- Entry Hall
- Orchids next to MMP bust
- Orchids a favorite of MMP



# Floral arrangements in the mansion

- French Drawing Room
- All arrangements have an element from Hillwood, even in Winter
- May (ish) through early November 100% from Hillwood
- Winter, flowers from Estate House, greens and branches from the property



# Floral arrangements in the mansion

- Pavillion
- Use flowers to compliment the décor of the room



# Floral arrangements in the mansion

- Breakfast Room
- Seasonal flowering displays
- Orchids
- Poinsettias
- Mums
- Spring bulbs
- Hydrangea
- Tropicals



# Floral arrangements in context of current exhibitions

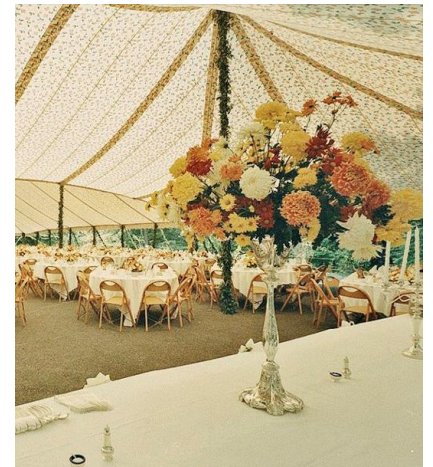
- Use of permanent botanicals in collection pieces
- Color coordinate place settings with flowers





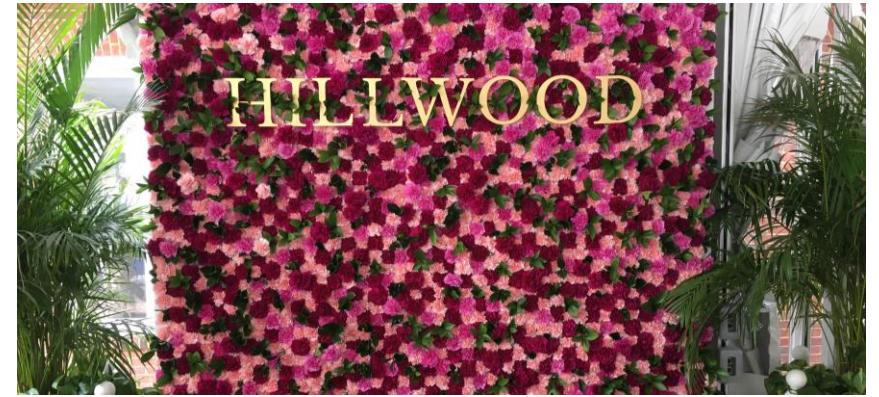
# Special Events

- Wedding of Dina Merrill to Cliff Robertson in the French Drawing Room, December 1966
- Tent set up on Lunar Lawn
- Tent set up on Lunar today for the Gala



# Special Events

- Gala in June
- Over 50 floral arrangements
- February 14th Event



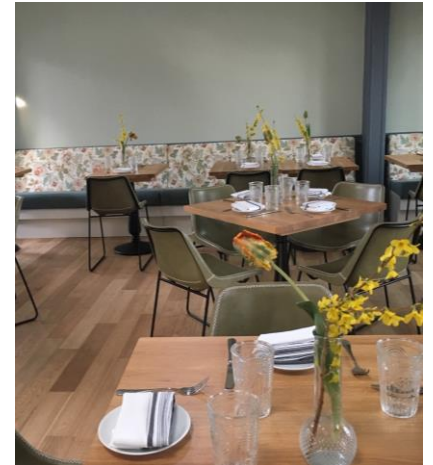
# Holidays at Hillwood

- Christmas trees
- Visitors Center
- Mansion – Dining Room, French Drawing Room, Pavillion, Entry Hall
- Poinsettias
- Swags and wreaths



# Daily Operations

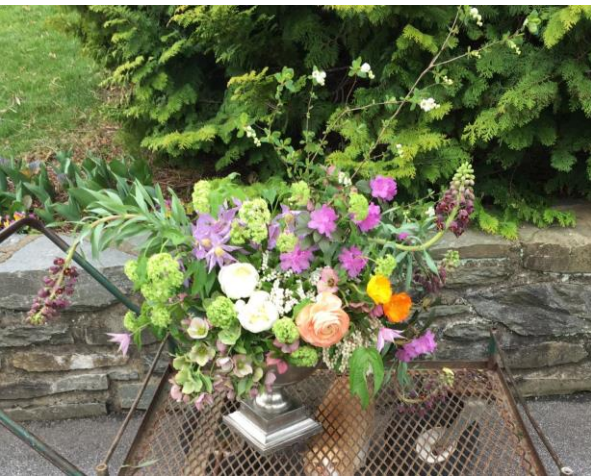
- Harvest flowers on Sundays (cutting garden)
- ~500 stems
- Create arrangements on Mondays with floral volunteers
- Visitors Center, VC restrooms, Terrace Conservatory, French Drawing Room, Pavillion, Entry Hall, MMP bedroom, Café and CW Post
- Chicken wire



# Volunteers and Workshops

- 10 active volunteers
- Weekly arrangements, special events and Holiday
- 9 public floral workshops
- 4 volunteer floral workshops





# Floral Design Today

- Current trend – garden style
- Keeping the spirit of MMP, what's in vogue
- Focal flower, color, texture
- Use of color theory and asymmetrical aesthetic
- Herb garden, elements of herbs in arrangements for dinner parties

# Final Thoughts

