

Hillwood's Garden Rooms

Rose Garden

Friendship Walk & Four Seasons Overlook

Putting Green

Lunar Lawn

Garden Docent Training 2019

Jessica Bonilla and Marshall Paquin



Rose Garden



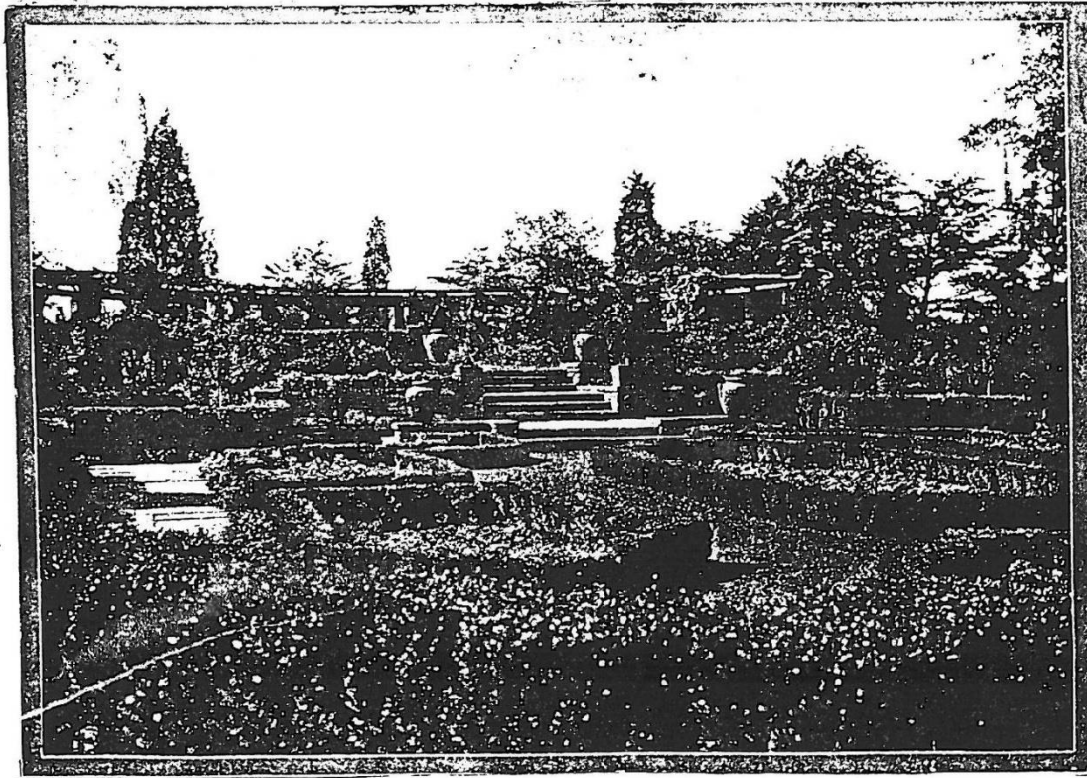
1. Design
2. Features
3. Marjorie Merriweather Post
4. Use today and maintenance

Willard Gebhart

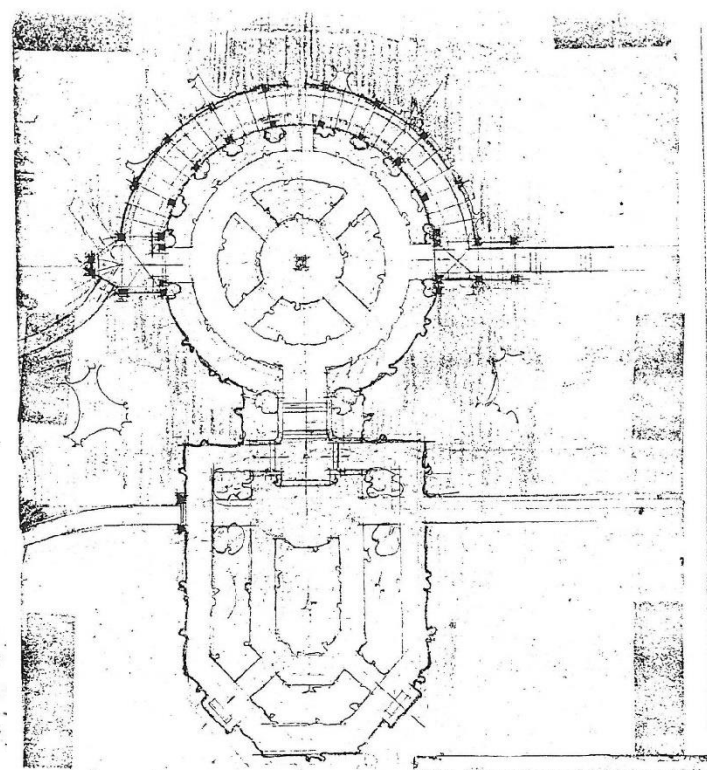


- 1900- 1993 born in Hart, Michigan
- 1924- Graduated from Cornell Univ. School of Architecture
- Hired by the firm of J.H. Small & Sons in Washington D.C.
 - ✓ First job was for Col. and Mrs. Henry P. Erwin at Arbremont
 - Tasked with designing and developing gardens that would embellish the new property

Willard Gebhart Design



Town & Country - 1937



My first job
Dec '24

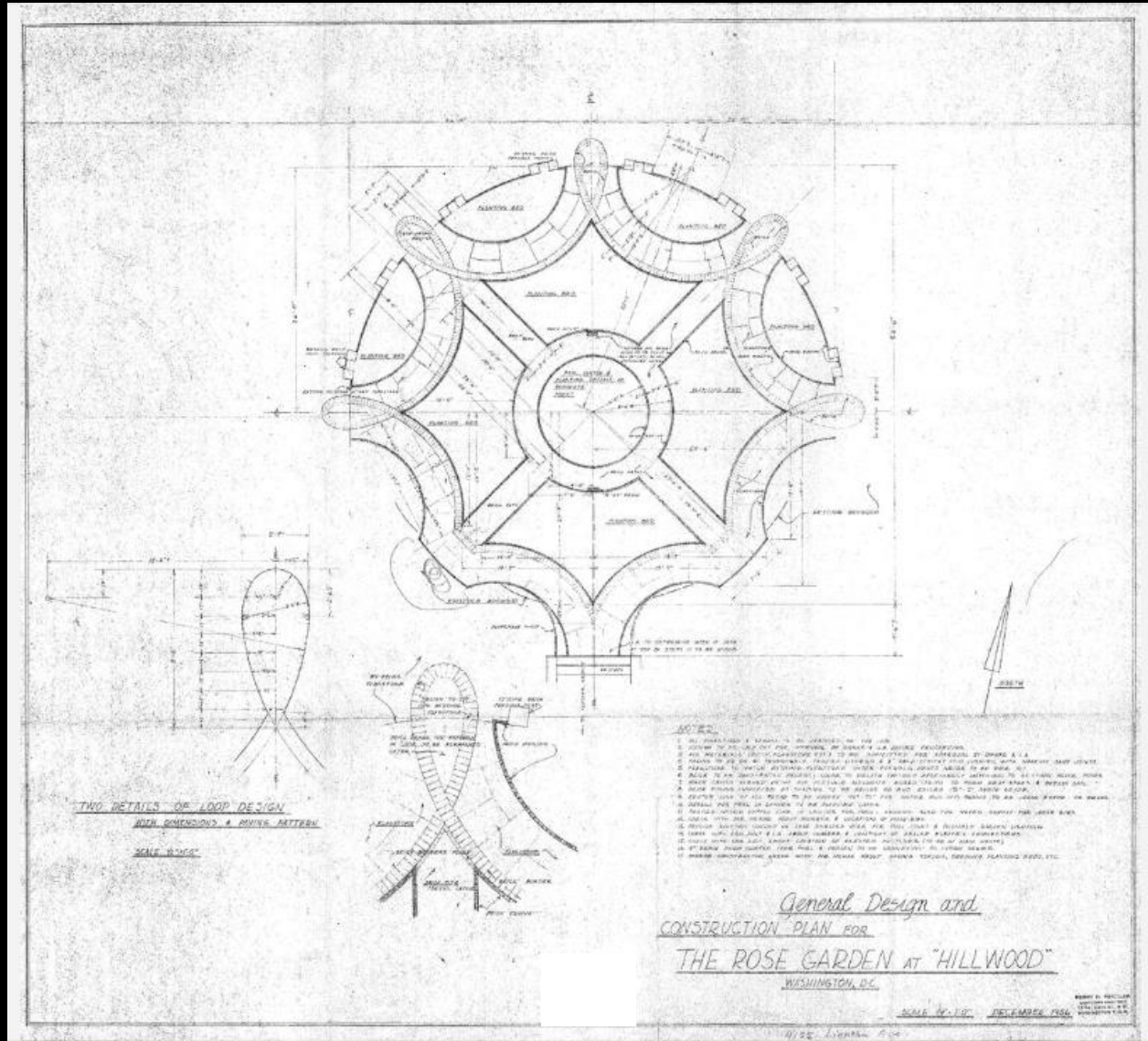
Below—The terraced rose garden of the home of Colonel and Mrs. Henry P. Erwin in Washington, D. C. is beautifully laid out, each plot with its clipped box border leading up to a crescent-shaped pergola, vine covered

Perry Wheeler



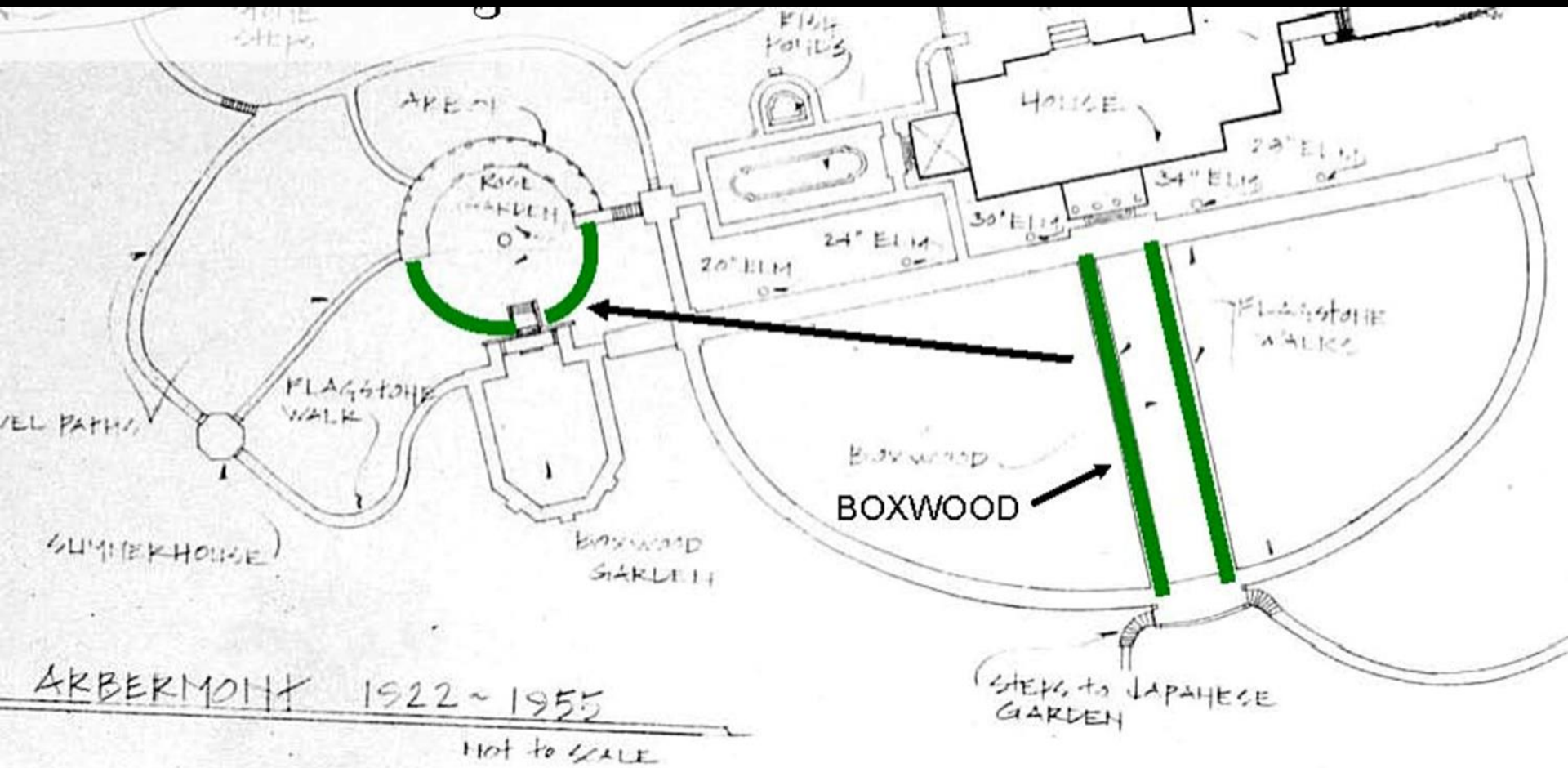
- 1913-1989 Born in Georgia
- 1938, Graduate degree in Landscape Architecture, Harvard
- Moved to Georgetown after WW2
- Established his own landscape architecture practice
 - ✓ Shared an office with Rose Greely
 - ✓ Best known for his work on private gardens
 - ✓ Other noteworthy commissions:
 - ✓ Collaboration on the White House Rose Garden, plantings at the National Arboretum, National Cathedral and Arlington National Cemetery
 - ✓ Specialized in intricate brickwork, low-maintenance gardens and simple water features

Perry Wheeler Design



1956

Perry Wheeler Design



Rose Garden 1957-1963



1963



Fountain Detail



2011



Features of the Rose Garden

Main Plants

- Floribunda Roses
- Climbing and Rambler Roses
- Boxwood
- Wisteria

Outer Plants

- Pieris
- Lilac
- Deutzia

Objects

- Pergola
- Lanterns
- Memorial

Apricot nectar



All Gold



Irish beauty



Europeana



Gene Boerner



Saratoga



Hillwood's Floribunda Roses

Gruss an Aachen



City of Leeds



Sarabande



Margaret Merrill



Floribunda Roses

- Latin for “abundant flowers”
- Polyantha rose crossed with a Hybrid tea rose
 - Polyantha for the profusion of blooms
 - Hybrid tea for the size & color range
- Comparison to the parents
 - stiff shrubs like hybrid tea
 - smaller & bushier than hybrid teas
 - flowers smaller than hybrid teas
 - less dense & sprawling than polyanthas
 - flowers in large sprays like the polyanthas



American Pillar



Hillwood's Climbing & Rambling Roses

Ena Harkness



Mermaid



Blaze



New Dawn



Other Important Plants

Boxwood



Other Important Plants

Wisteria



Pieris



Other Important Plants

Lilac



Deutzia



Objects- Pergola



Japanese Lanterns

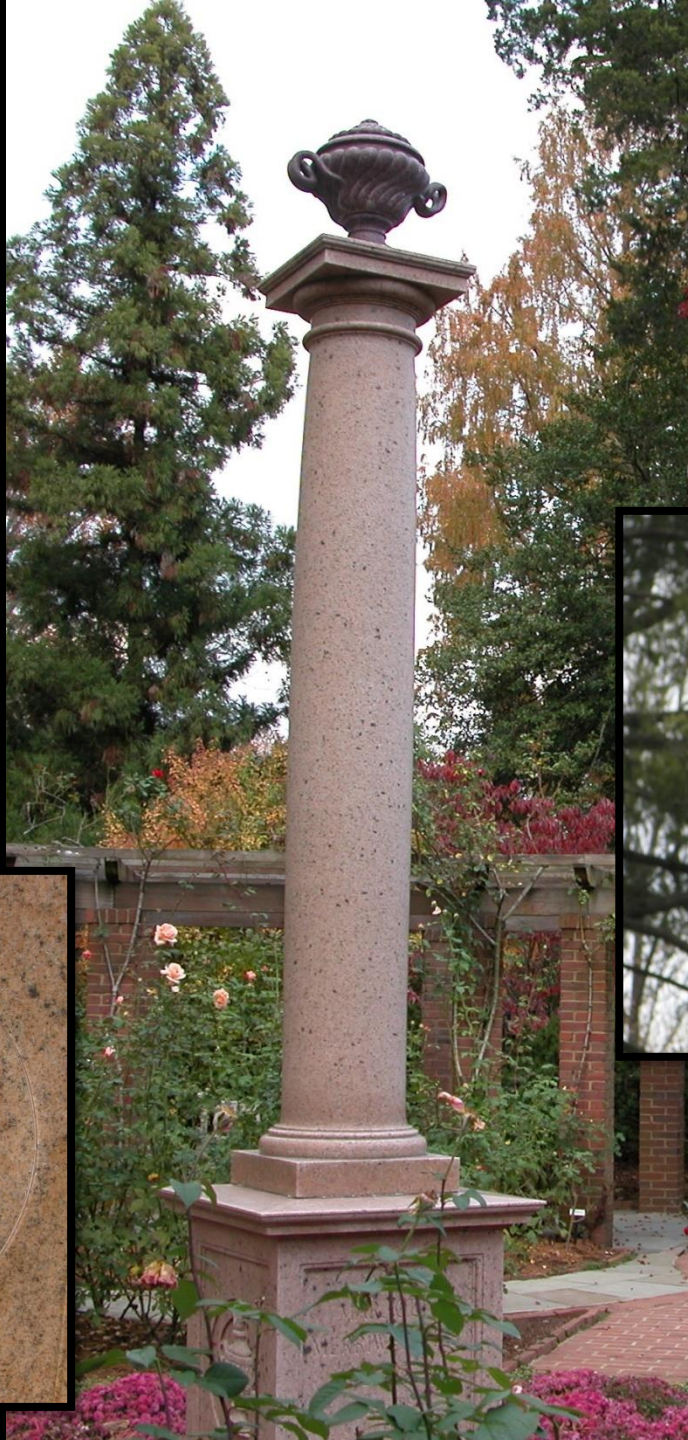
- American
- 20th century
- Bronze



Memorial



Memorial



- Acquired by children
- Made in Paris
- 1780-1790
- Porphyry



Memorial

Coat of Arms



“In me mea spes
omnis”

All my hopes
rest in me

Marjorie Post in the Rose Garden

1963



1957

Marjorie Post in the Rose Garden



Rose Garden 1973



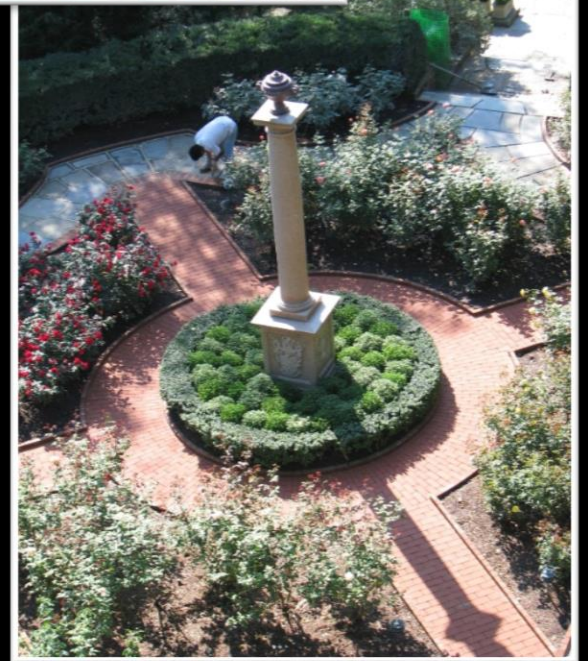
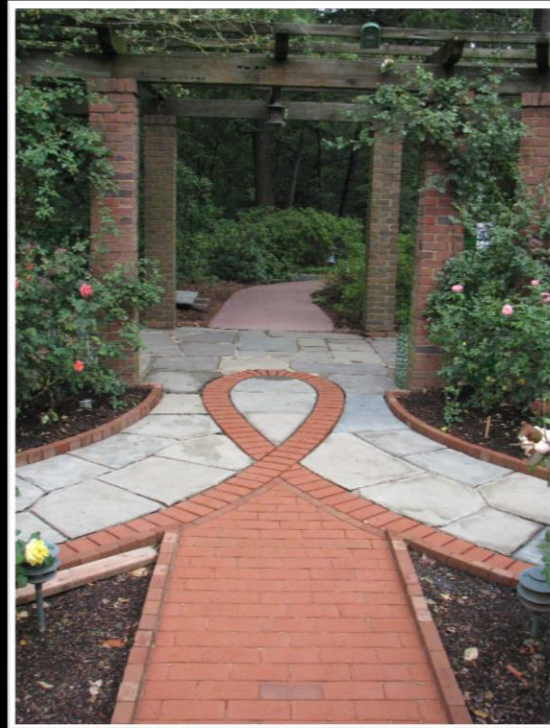
Today's Use of the Rose Garden



Renovation Project



Renovation Project



2011

Maintenance

Pergola, Lanterns and Monument

- Monitored, cleaned and repaired as needed

Roses

- Pruning
 - March/April- Hard prune
 - Deadhead once a week
- Water and fertilize
- Monitor and manage disease and insect problems
- Mulch at least twice a year

Garden

- Three seasonal change outs (bulbs, summer annuals, and mums), sometimes more
- Prune Wisteria

HILLWOOD

ESTATE, MUSEUM & GARDENS

Friendship Walk
& Four Seasons Overlook



1. Designers and History
2. Features
3. Marjorie Post in the Room
4. Maintenance and Use Today

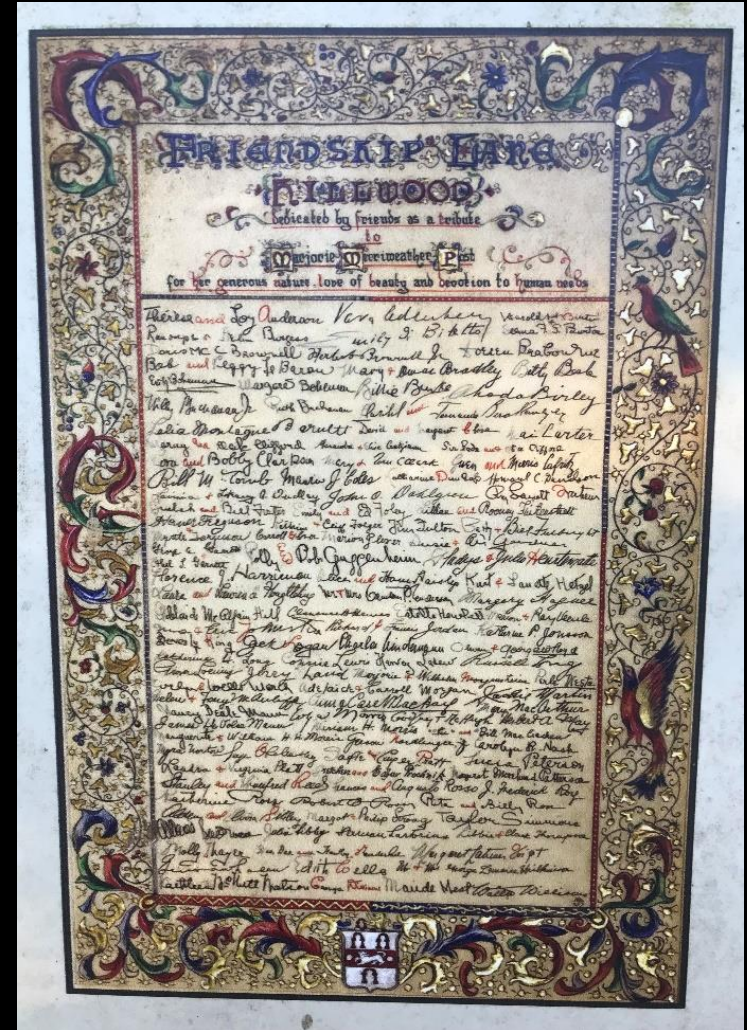
Theme of Friendship Walk

- Organized in secret in 1956 by Lady Lewis (Connie), Madame Augusto Russo (Frances), George Williams, and General and Mrs. H. Conger Pratt (Conger and Sadie)
- As “a testimonial to Marjorie...We are fully conscious of her love of beauty and the endless care she gives to her gardens.”
- Contributions from her friends to purchase sculpture, paving, and plants. Contributing friends included diplomats, supreme court justices, ambassadors, generals, senators, socialites, cabinet members, and her staff.

Watercolor, below, on outdoor interpretive sign in overlook.

This watercolor dedication to Post features signatures of the 181 friends who contributed to the walk and overlook.

On November 2, 1957 her friends dedicated the garden to her at a ceremony.



Friendship Walk Design Sketch

The path and overlook circle were designed by Perry Wheeler

The design was based on a traditional English informal landscape



Features of the Friendship Walk

Statuary

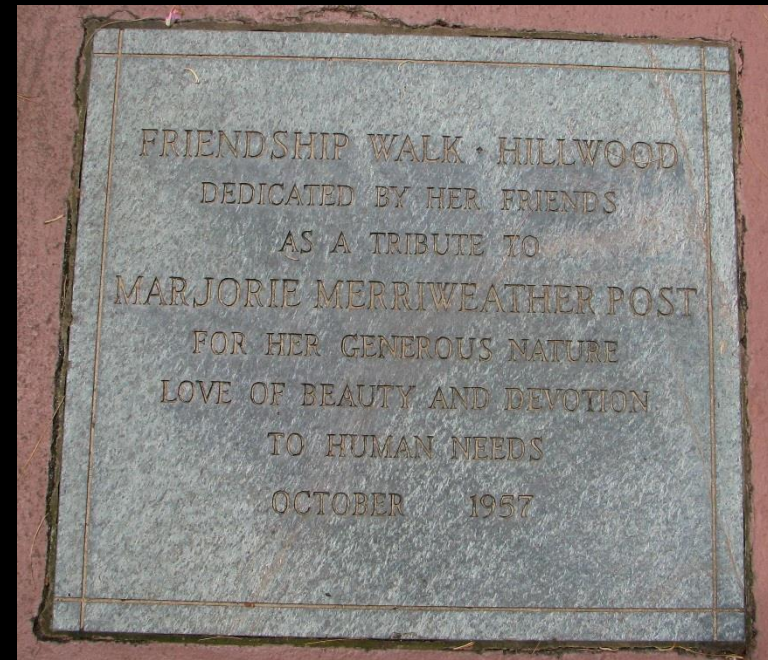
- Dedication Stone
- Statues at Entrance
- Iron Gates
- Boy Scout Stone
- Hush Boy
- Four Seasons Statues
- Center of Friendship Circle
- Bronze Eagles
- Benches
- Garden Plaque

Plants

- Boxwood
- Sweetbox
- Bulbs
- Japanese Snowbell
- Witch hazel
- Southern Magnolia

The Dedication Stone

“Friendship Walk – Hillwood, dedicated by her friends as a tribute to Marjorie Merriweather Post for her generous nature, love of beauty, and devotion of human needs.”



Contributions from friends



Iron Gates

A volunteer garden docent made a donation for their replacement in 1996.

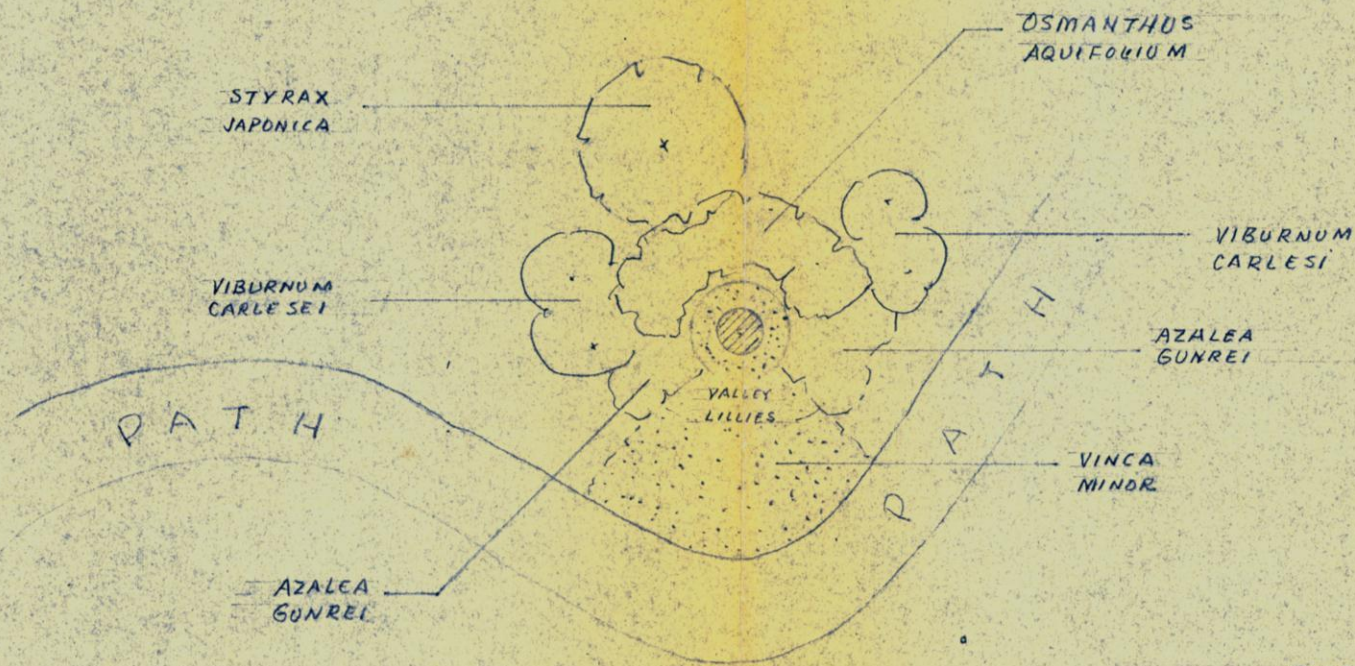


Washington Chapter Boy Scouts

- Mrs. Post supported and made donations to the Boy Scouts of America troop #52
- In 1960 they dedicated plaque on the large stone for her contributions



Perry Wheeler design donated by Cmdr. Ault and used for garden area around Boy Scout Stone



SUGGESTED PLANTING
AULT BIRDBATH
Hillwood

PERRY H. WHEELER
LANDSCAPE ARCHITECT
8054 24TH ST. N.W.
WASHINGTON 2, D.C.

Gil
W/S

5-9-60

‘Hush Boy’ Statue



- “The birds are singing and the beauty of the garden is very close by”
- Presented to Mrs. Post in 1957 by Commander and Mrs. Clyde B. Ault.
- Ault was in charge of overseeing Hillwood’s renovation.

Four Seasons Overlook

- Four lead statues represent the four seasons of the year
- Plaques with the names of the donors are located on the base of each statue
- Three bronze eagles are mounted above the ivy covered chains



Fall

Winter

Spring

Summer



Center of Four Seasons Overlook



1964

- Presented by Madame Augusto Rosso
- Made of Black serpentine Italian marble
- Inscription: Friendship Outstays the Hurrying Flight of Years and Aye Abides Through Laughter and Through Tears
- Taken from a 1909 post card sent by the Russian Empress Alexandra her friend Countess Ann Virubova.

View of The Lower Gate 1964





Bronze Eagles



- Sculpted by Paul Wayland Bartlett in 1916
- The word “preparedness” is inscribed on the shield of the middle eagle
- Gift from Caroline Jones Peter, stepdaughter of Paul

Cast Iron Benches

Two of them
are from
Marjorie's time

The other two
were exact
replicas and
donated in
2014



Gift from Mamie Eisenhower

“The kiss of the sun for pardon,
the song of the birds for mirth,
one is nearer to God’s heart
in a garden than anywhere on
earth.”

by Dorothy Frances
Gurney



Origin of the Boxwood plants

- Boxwood on the west side of the walk are from Mount Vernon

The tallest ones in hedge are the original plants from 1957



Boxwood

Buxus sempervirens 'suffruticosa'

- Slow growing, but may get up to 5 feet after many years
- Valued for their tolerance to pruning
- Resistant to boxwood leaf miner



Sweetbox

Sarcococca hookeriana var. *humilis*

- Mature size is 12 to 24 inches
- Does best in part to full shade
- Prefers soil rich in organic material
- Small white flowers bloom March to April
- Located off of Friendship Circle





Tulipa bakeri
'Lilac Wonder'



Iris reticulata 'Harmony'

Japanese Snowbell

Styrax japonicus

- Mature size is 20 to 30 feet in height and width
- Flowers in May
- Has a small, ½ inch long fruit that is noticeable in August





Common Witch hazel- *Hammelis virginiana*

- Can reach 30 feet tall and 25 feet in width
- Prefers sun or shade
- It is native
- Flowers in mid to late October



Southern Magnolia

Magnolia grandiflora

- Can reach heights of 60 to 80 feet
large leaves 5 to 10 inches long
- Flowers are white and 8 to 12 inches in diameter
that bloom from May to June





Marjorie Post with guest, 1957



Maintenance

Boxwood care-

- add lime to increase pH of soil
- add compost to improve soil texture and increase organic matter
- fertilize in early spring
- selective pruning to allow better air flow/disease prevention in early spring

* In 2018 a section of hedge was raised to further improve drainage.

Seasonal plants (pansies, angelonias, begonias etc.)-

- changed every Spring, Summer and Fall

Ivy (Friendship Circle)-

- trimmed 2-3 times a year to maintain growth habit around chains

Renovation scheduled for 2019



HILLWOOD

ESTATE, MUSEUM & GARDENS

The Putting Green

History

- The original space was part of the Willard Gebhart design of the 1920's
- Instead of a putting green, it was a formal flower bed with boxwood parterres
- In 1955 – 1957 parterres removed and bentgrass green installed
- Shape of space similar to original design
- Sometime after Marjorie's death, putting green was replaced with standard lawn turf
- During restoration of 2000, the putting green was re-installed to USGA standards









Marjorie Post and Golf

- Post had 9 hole golf courses at her estates in Tregaron NW, Roslyn, New York and Palm Beach, Florida
- She had putting greens at Hillwood and Camp Topridge

* Marjorie Post at Camp Topridge



Marjorie Post at Mar-a-Lago LIFE magazine article Nov 5, 1965

An enthusiastic golfer, Mrs. Post maintains at least a putting green at each of her homes. At Palm Beach she has a nine-hole course. She plays infrequently now and does not keep score. "It's exercise golf when I play," she says. But that does not lessen the intensity of her game, which, while grandmotherly, frequently produces a par.



1970





Features of the Putting Green

Plants

- Creeping Bentgrass
- Japanese Holly
- Vanhoutte Spirea
- Japanese Snowball Viburnum
- Hinoki Cypress
- Azaleas

Creeping bentgrass

Agrostis palustris

- Low growing turfgrass with mowing heights down to 1/8 of an inch
- The Hillwood putting green is mowed at 1/4 of an inch to reduce summer time stress



Japanese Holly

Ilex crenata 'Howard'

- Compact evergreen shrub
- Maximum height is 6 ft
- Boxwood like habit; can tolerate shearing



Vanhoutte Spirea

Spiraea x vanhouttei

- Blooms in late April/Early May
- 5-8 ft tall, 7-8 ft wide
- Vase like shape/growth habit



Japanese Snowball Viburnum

Viburnum plicatum f. *plicatum*'

- No longer considered a straight species
- Has sterile flowers that do not produce fruit
- Snowball-like flowers are 2-3 inches in diameter
- Can reach heights of 15 feet



Hinoki Cypress

Chamaecyparis obtusa

- Very slow growing
- Can get over 100 ft tall
- Evergreen



'Delaware Valley White' Azalea



Putting Green with normal turf





Visitors putting during a public program, next to a poster of Post putting



Maintenance

- The putting green is cut up to 3 times a week from April through October
 - Mowing height of green is $\frac{1}{4}$ of an inch
 - The collar is cut once a week
- Mowing height of collar is 2 inches
has irrigation system
- Core aeration is performed at least once per year in late summer
 - Cores removed, replaced with USGA sand
- Fertilizer is regularly applied to promote growth and vigor.

Specialized equipment for Bentgrass maintenance



Putting Green Fan



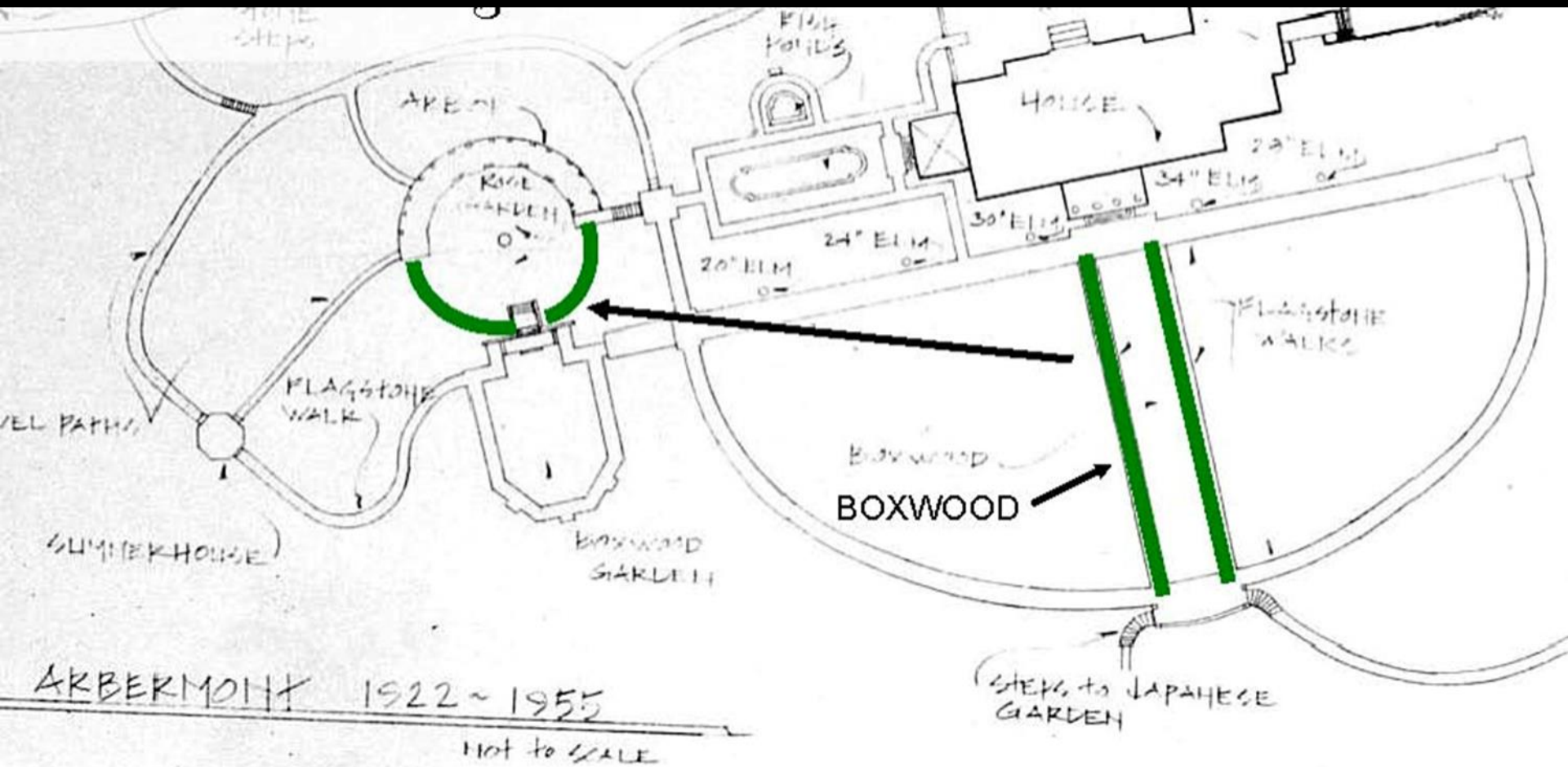
The Lunar Lawn



1954



Perry Wheeler Design



Front of the mansion

1960





Features of the Lunar Lawn

Plants

- Lawn
- American Elms
- Seasonal border
- Double-flowering cherry
- Horse chestnut

Objects

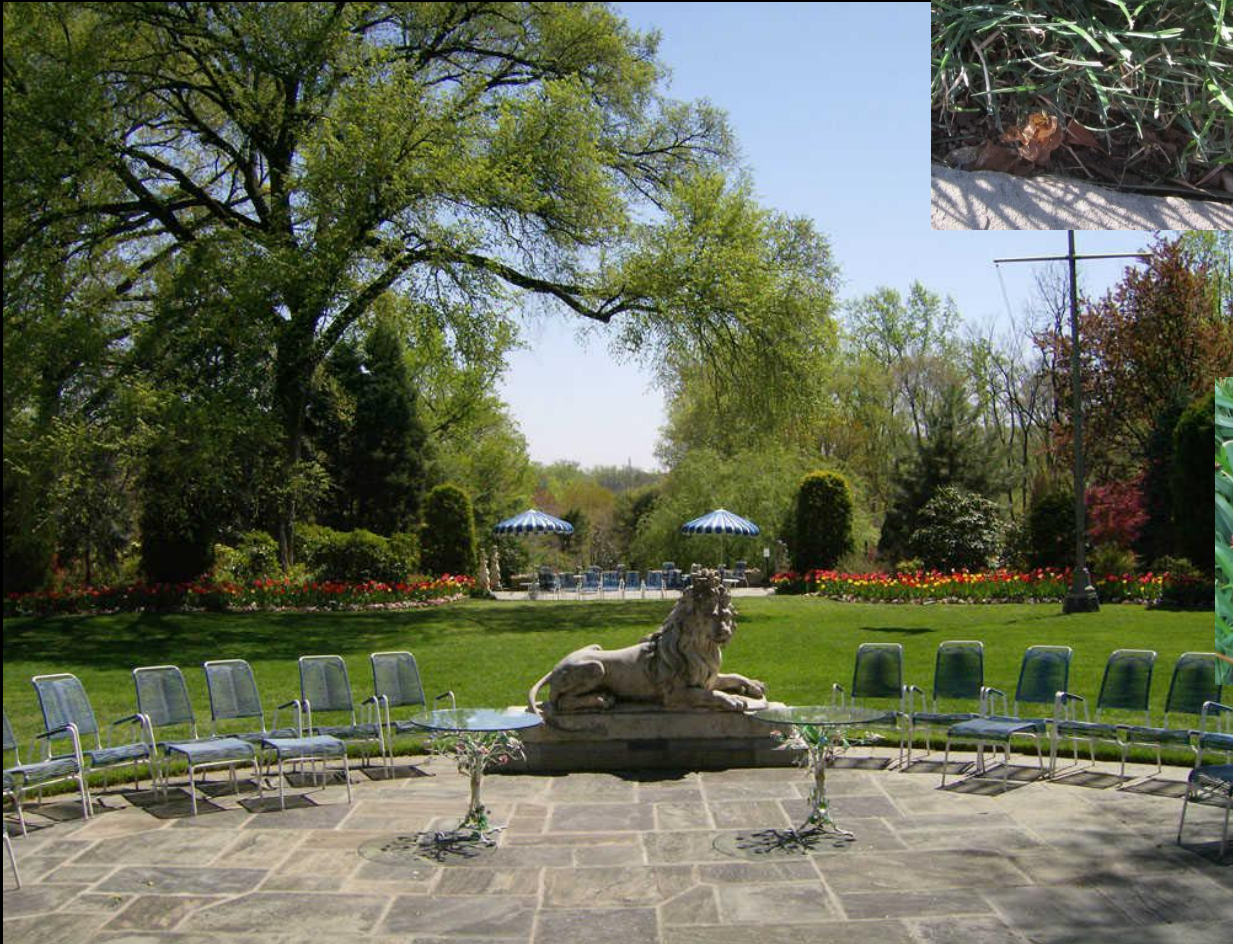
- Leo
- Flagpole
- Gold fountain
- Armillary spheres
- Squirrels
- Sphinxes

View of Washington monument

Lawn

13,000 sqft

Kentucky Bluegrass



Tall Fescue



American Elm

New disease resistant cultivars
'Princeton' and 'Valley Forge'



Seasonal Display

1966

2018



Other Important Plants

Double-flowering cherry



Horse chestnut



Objects

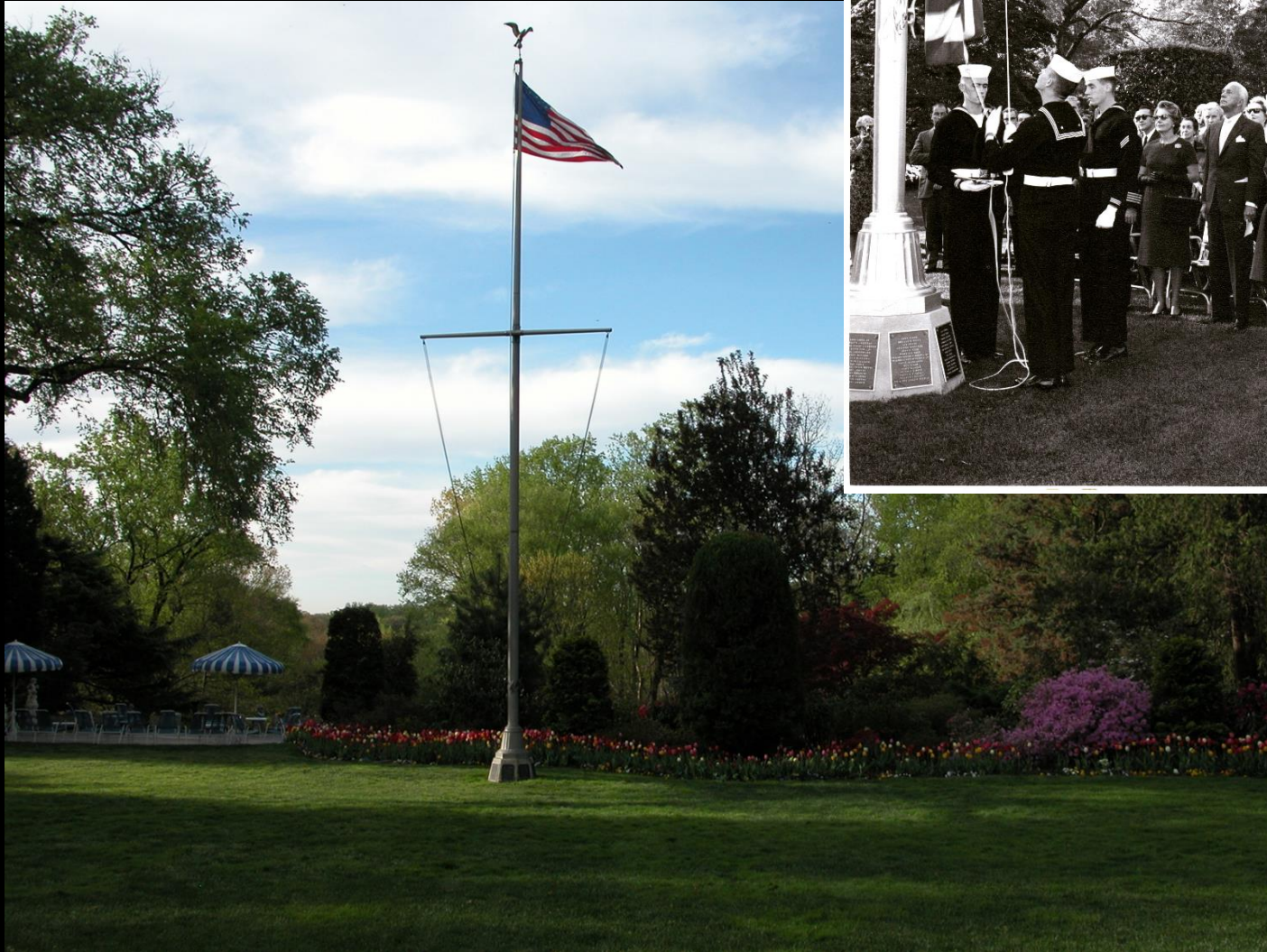
Leo

- Purchased 1956
- English ca. 1700
- Said to have come from the Old Somerset House in London



Flagpole

1962



Flagpole



Gold Fountain

- French ca. 1750
- Gilt lead and marble
- Moved from NY apartment



Armillary Spheres





Armillary Spheres

- 19th century English
- Designed by architect J. Burnet
- Cast by the Bromsgrove guild in London

Squirrels

- Italian ca. 1950
- Vicenza stone





- 18th century French
- Terra cotta
- Marie Antoinette & Marie Therese, Princess de Lamballe



Sphinxes

Feature- View of Washington Monument



Marjorie Post on the Lunar Lawn



Marjorie Post on the Lunar Lawn

Marjorie Post hosting veterans



Marjorie Post with Ladybird Johnson 1966

1961



Today's Use of the Lunar Lawn

2018



Today's Use of the Lunar Lawn



1997 – 2000 Mansion Restoration



New Kentucky bluegrass sod and sand spring 2009



Maintenance

Statuary

- Monitored, cleaned and repaired as needed
- Covered in December

Fountain

- Skimmed Daily w/ addition of bleach every other day
- Drained and covered in December

Lawn

- Mowed weekly at a height of 2-3" April through October
- Fertilized, treated for weeds, overseeded and aerated

Garden

- Three seasonal change outs (bulbs, summer annuals, and mums)
- Elms are evaluated and pruned in winter
- Tree pruning to maintain view of the Washington monument

American Elms and Dutch Elm Disease

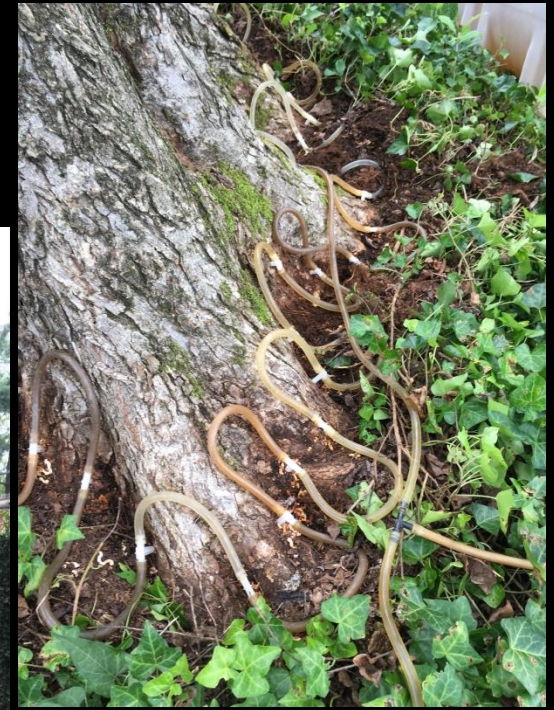


Protecting Elms from Dutch Elm Disease



Fungi-Ophiostoma
novo-ulmi

Elm Bark Beetle



Thank You for Coming!

Hillwood's Garden Rooms

Rose Garden

Friendship Walk

Putting Green

Lunar Lawn

