

Motor Court & French Parterre

Garden Docent Training 2019

Jessica Bonilla

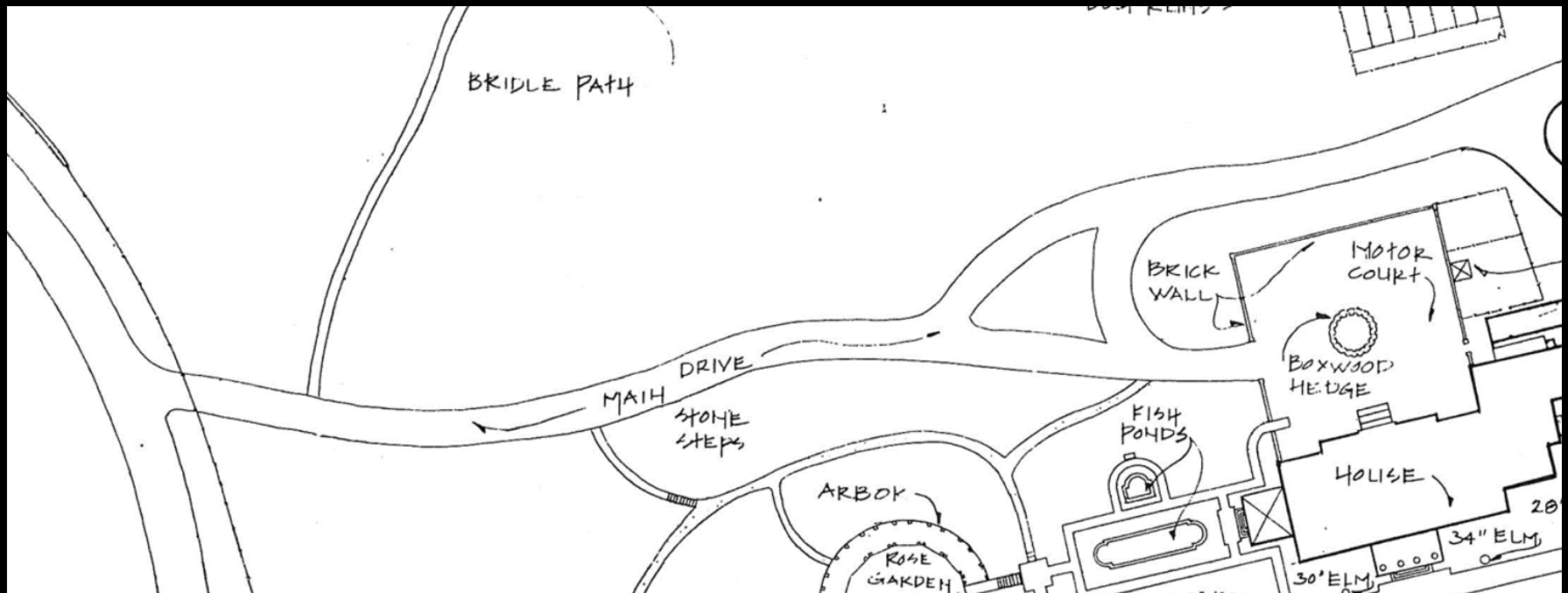
HILLWOOD
ESTATE, MUSEUM, & GARDENS

Motor Court



1. Design
2. Features
3. Marjorie Merriweather Post
4. Use today and maintenance

Arbremont's motor court and main drive



Willard Gebhart



- 1900- 1993 born in Hart, Michigan
- 1924- Graduated from Cornell Univ. School of Architecture
- Hired by the firm of J.H. Small & Sons in Washington D.C.
 - ✓ First job was for Col. and Mrs. Henry P. Erwin at Arbremont
 - Tasked with designing and developing gardens that would embellish the new property

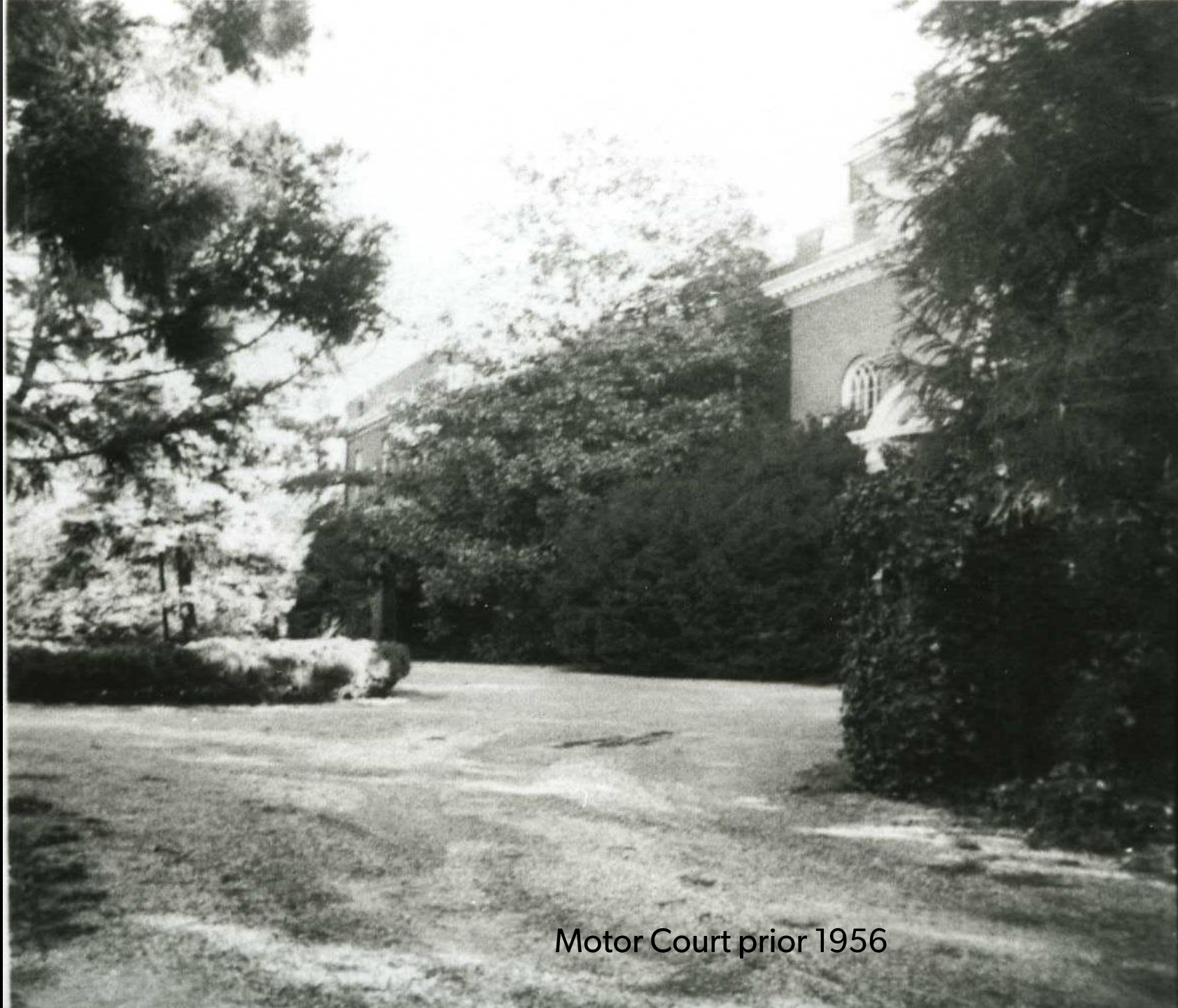
Willard Gebhart



- Hallmarks of Gebhart's style
 - ✓ Easy access from house to garden
 - ✓ Strong, central axis (flagstone promenade paralleling the house)
 - ✓ Broad terraces overlooking pleasant views (Vista terrace)
- Career spanned 65 years
 - ✓ Prominent projects in D.C. include the Folger Shakespeare Library and the British Embassy



Porte-Cochere prior 1956



Motor Court prior 1956

Innocenti & Webel

- Umberto Innocenti (1895 – 1968) born in Florence, Italy
 - ✓ Known for his hands-on approach and plant knowledge
- Richard Webel (1900 – 2000) grew up in the DC area
 - ✓ Skilled draftsman; 1926 bachelor's and master's from Harvard in landscape architecture
- Landscape architecture firm formed in 1931
 - ✓ Began by designing private estates in Long Island, NY
 - ✓ Noted for strong formal geometric shapes, European influenced designs and installing mature plant specimens



INNOCENTI & WEBEL

LANDSCAPE ARCHITECTS • ARCHITECTS • PLANNING CONSULTANTS

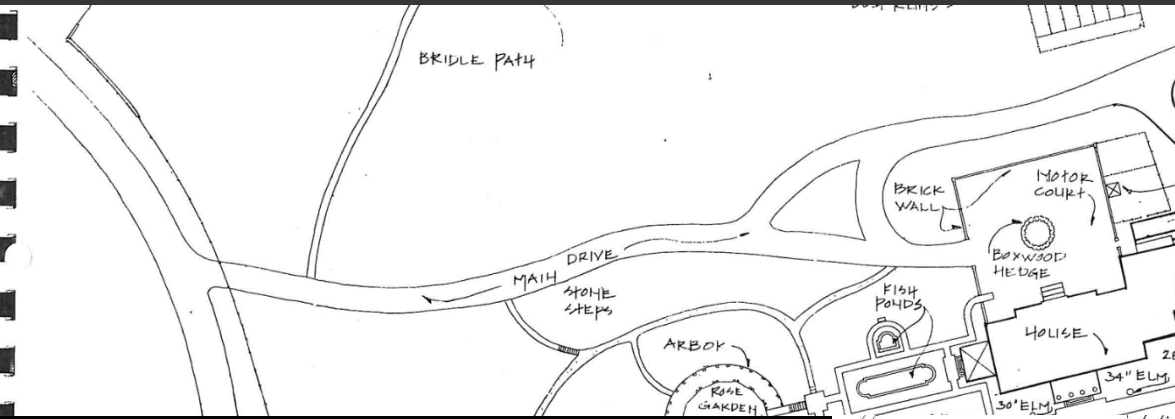


LANDSCAPE PROJECTS

ARCHITECTURAL PROJECTS

FIRM

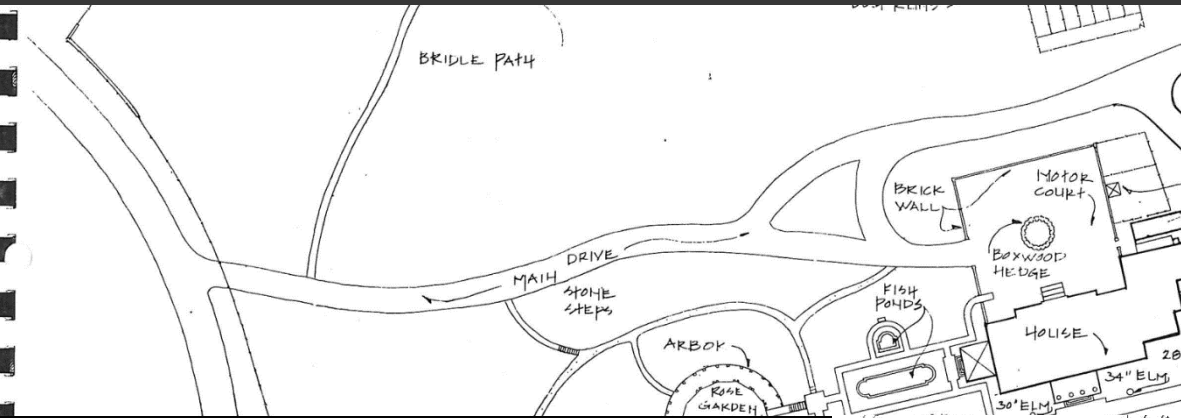
CONTACT



Arbremont

Post's Hillwood





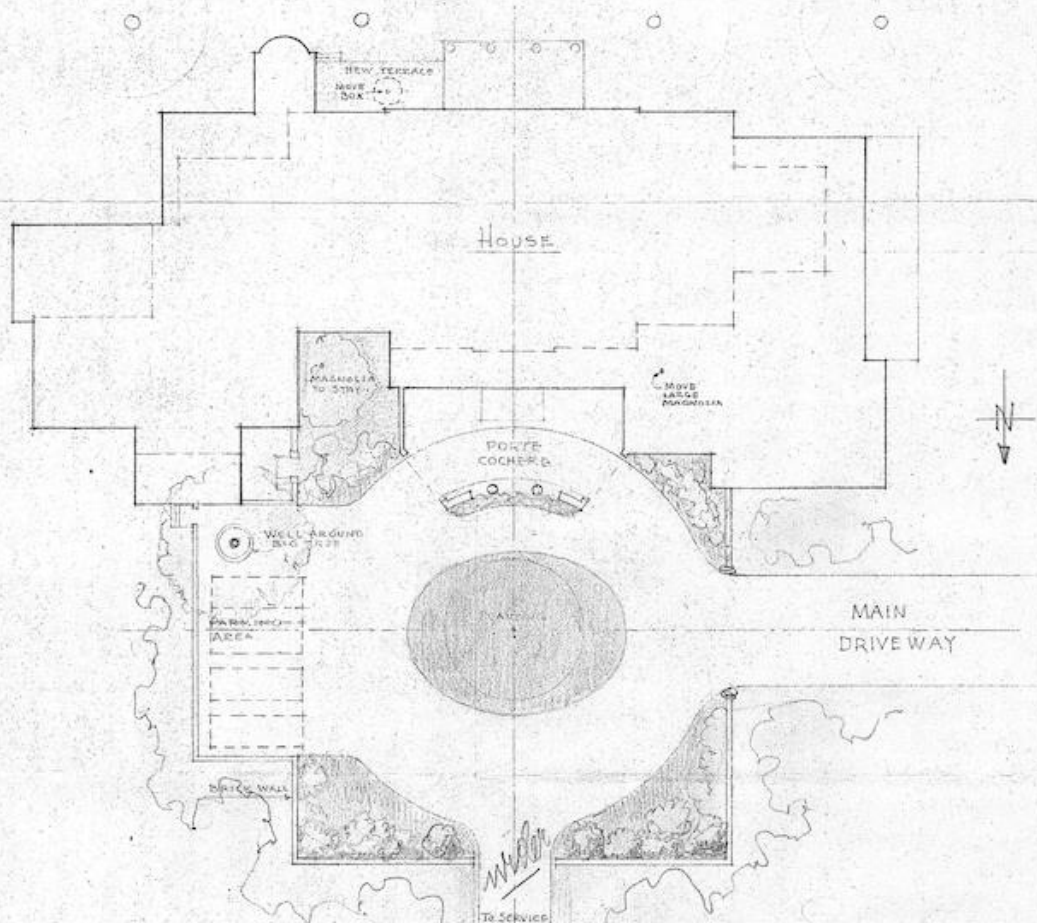
Arbremont

Post's Hillwood

Upper Drive

Lower Drive





*OK when arrives
with
M.P.*

*7 oval
not circle
7 trees to
move
see full plan &
wall*

ENTRANCE COURT
For
HILLWOOD

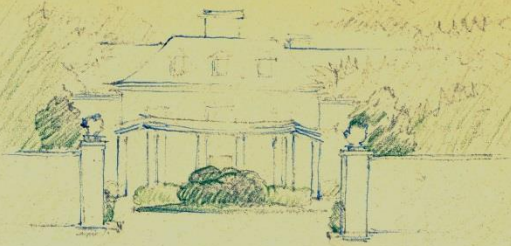
Scale: one inch = 20 ft.

MAY 13, 1955

Perry Wheeler



- 1913-1989 Born in Georgia
- 1938, Graduate degree in Landscape Architecture, Harvard
- Moved to Georgetown after WW2
- Established his own landscape architecture practice
 - ✓ Shared an office with Rose Greely
 - ✓ Best known for his work on private gardens
 - ✓ Other noteworthy commissions:
 - ✓ Collaboration on the White House Rose Garden, plantings at the National Arboretum, National Cathedral and Arlington National Cemetery
 - ✓ Specialized in intricate brickwork, low-maintenance gardens and simple water features



approach looking south-east



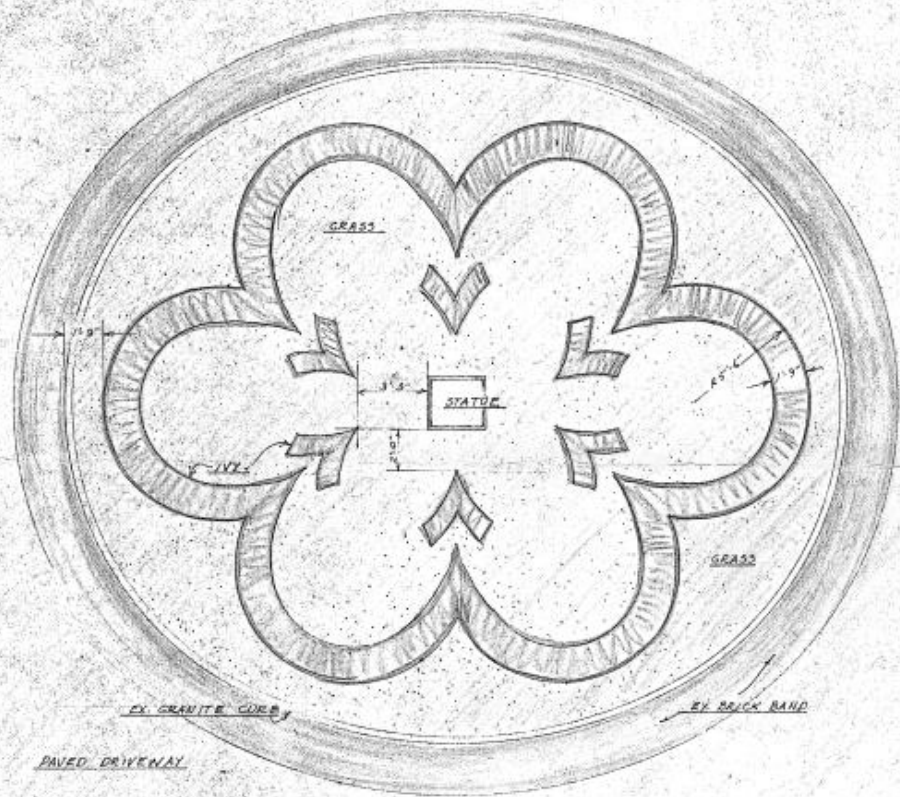
approach looking east.



looking south from center of forecourt

Sketches - to accompany Proposed Planting Plan
for forecourt at "Hilwood," Washington, D.C.

February
1957



Planting Design
FOR OVAL IN FORECOURT AT
"HILL WOOD"

SCALE 1/4" = 1'-0" FEBRUARY 1957

PERRY H. WHEELER
LANDSCAPE ARCHITECT
1534 - 25TH ST., N.W.
WASHINGTON 7, D.C.

accepted by Mrs. Post - March '57



Motor Court mid to late 60's



Motor Court Aerial View early 1960's





Features of the Motor Court

Center, circular island:

- Statue of Eros
- Boxwood
- English ivy

Other Objects

- Flower baskets
- Urns
- Eagle snow guards
- Weather vane

Features of the Motor Court

Other Plants:

- Blue Spruce
- English Holly
- Pyracantha
- Dawn redwood
- Boston Ivy
- Deodar cedar
- Chinese juniper
- Eastern red cedar
- Purple-leafed plum
- Flowering Dogwood
- Azaleas
- Rhododendrons

Motor Court Island





Eros



Golden Boxwood arrows



English Ivy swags

Motor Court Island



Other Objects



Fruit Baskets
On top of brick
entrance pillars



Urns
On top of Porte cochere

Other Objects



Eagle Snow Guards
Mansion roof



Weather Vane
Mansion roof

Other Plants



Blue Spruce

Variegated English Holly

Other Plants

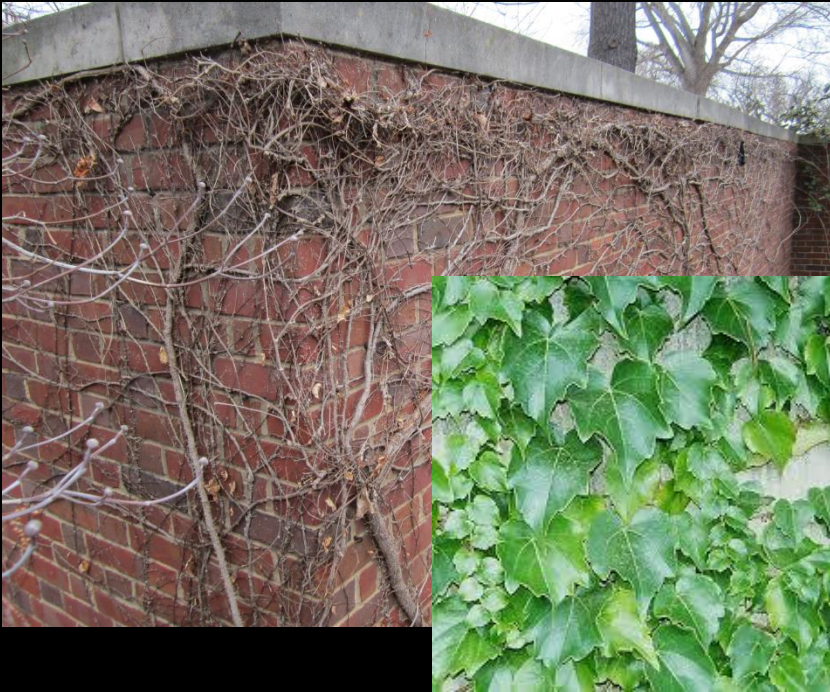


Pyracantha



Dawn Redwood

Other Plants



Boston Ivy



Deodar cedar

Other Plants



Chinese juniper



Eastern red cedar

Other Plants



Purple-leafed plum



Flowering Dogwood

Other Plants

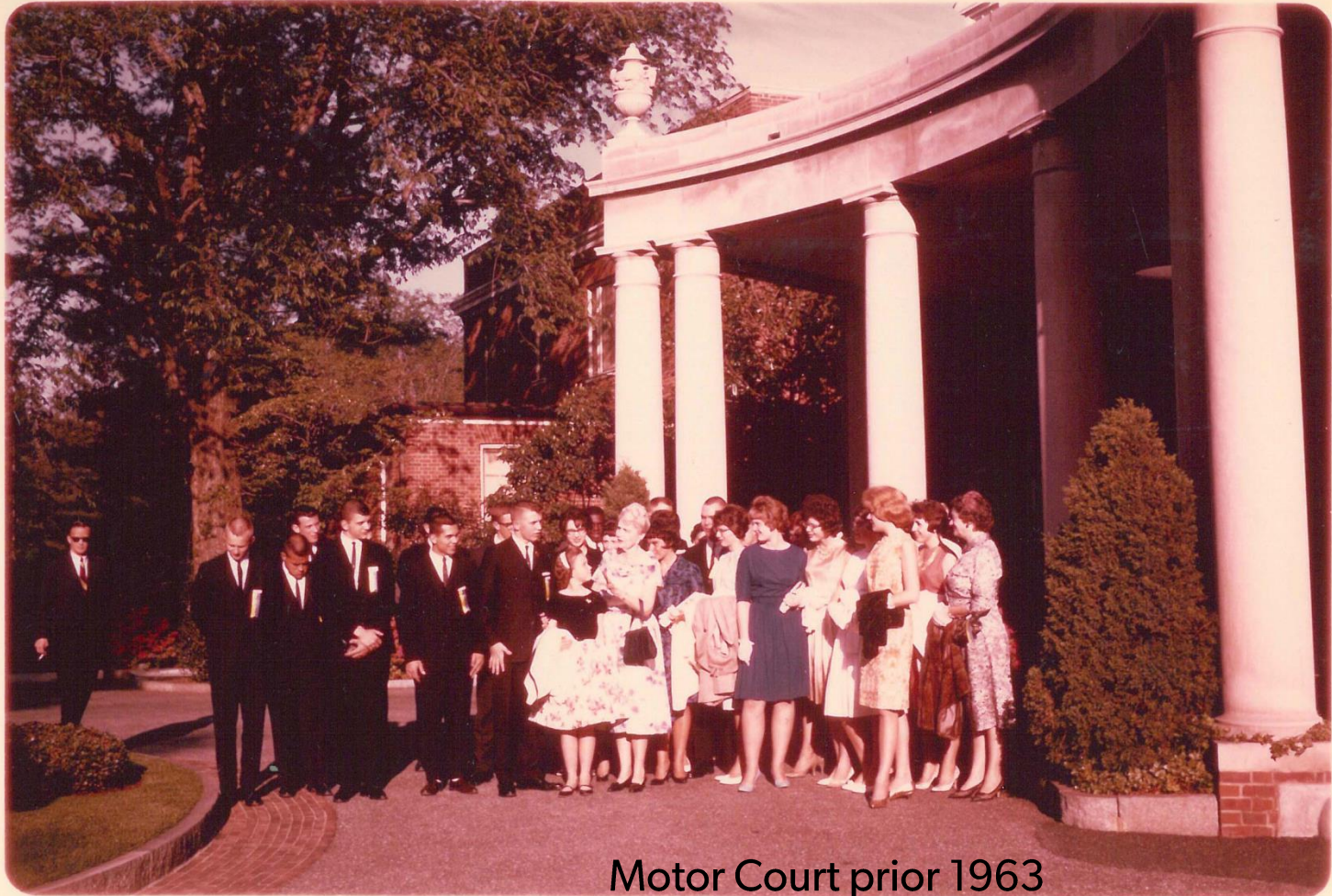


Azaleas



Rhododendrons

Marjorie Merriweather Post in the Motor Court



Motor Court prior 1963

Today's Use of the Motor Court



Today

1963



Today's Use of the Motor Court



Maintenance

Statues

- Cleaning

Garden Beds

- Continuous weeding
- Pruning- either by hand or gas shears
 - Pyracantha- 5+x per year (highest maintenance)
 - English ivy- 4x per year
 - Everything else- 1 to 2x per year
- Three seasonal changeouts (bulbs, summer annuals, and mums)

Porte cochere



1962

Porte cochere



2018



Porte cochere

- Two complete change-outs per year
- Add seasonal interest

The French Parterre



French Parterre



1. Design
2. Features
3. Marjorie Merriweather Post
4. Use today and maintenance

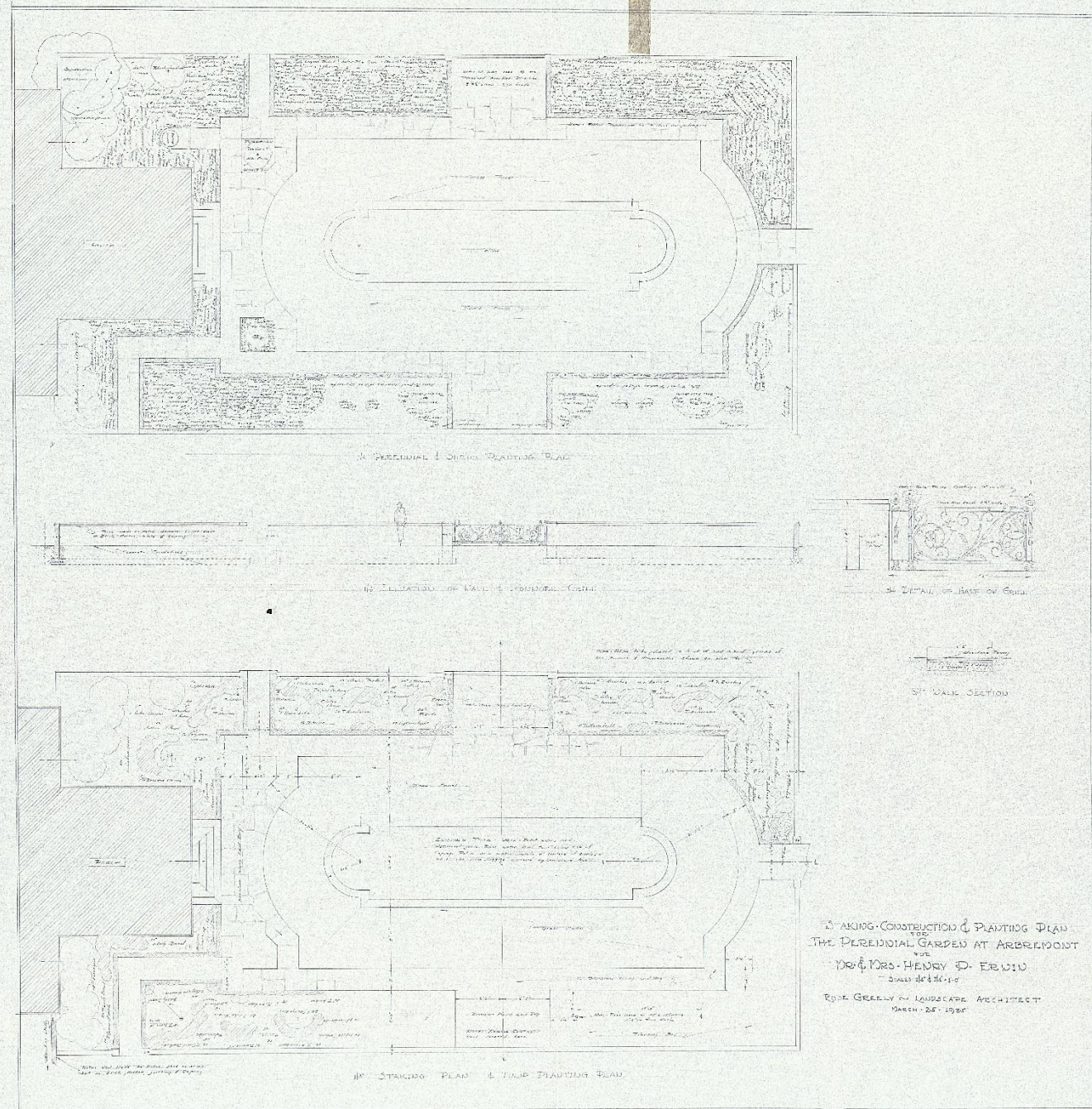
Rose Ishbel Greely



- 1887- 1969 Washington, D.C. native
- 1925- Washington's first female licensed landscape architect
 - ✓ 40 year career in the D.C metro area
 - ✓ Specialized in residential design
 - ✓ Largest commission: Aberdeen Proving Grounds for the Army

Rose Greely Design

March 1935





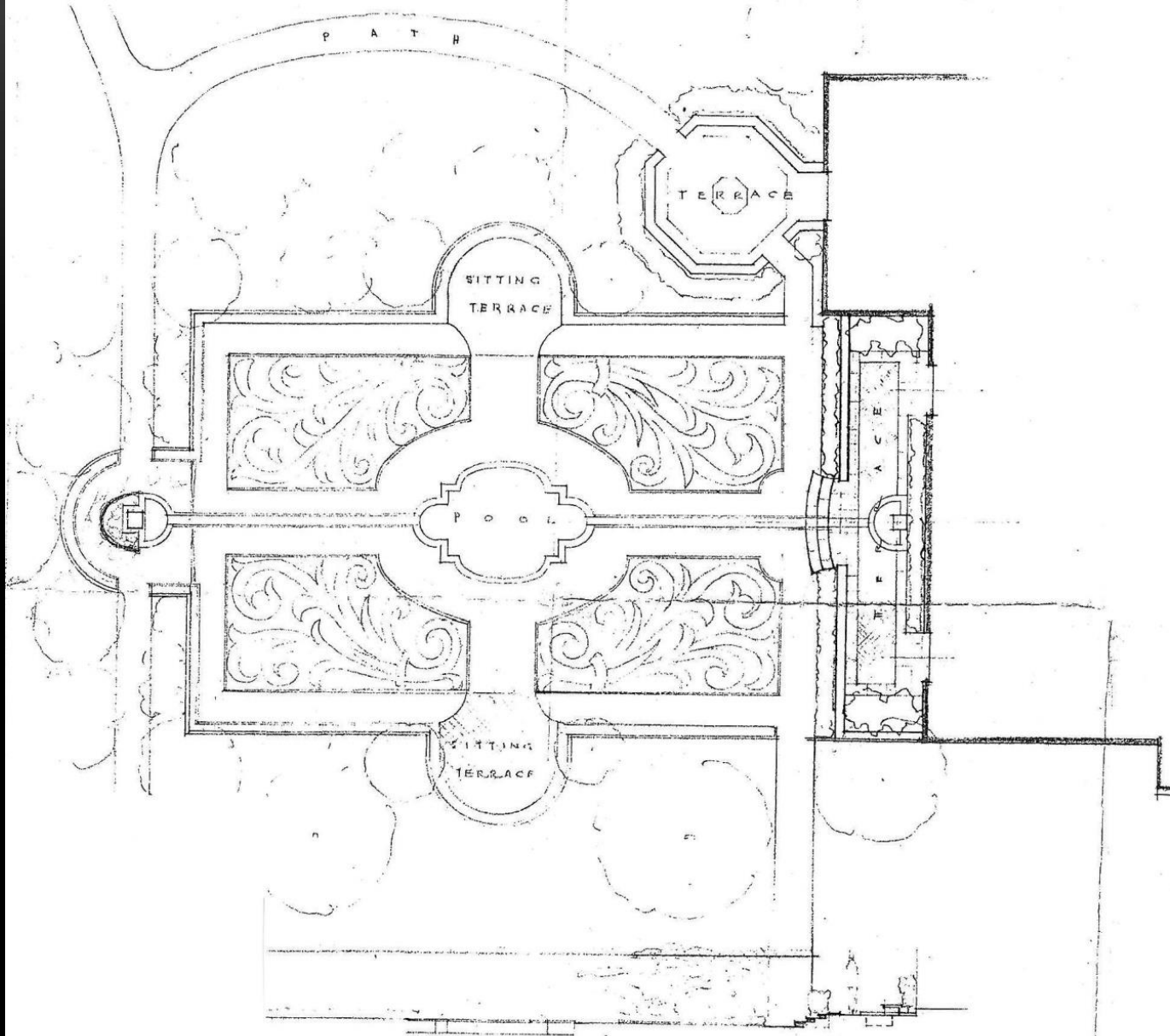
French Parterre prior 1956

Innocenti & Webel

- Umberto Innocenti (1895 – 1968) born in Florence, Italy
 - ✓ Known for his hands-on approach and plant knowledge
- Richard Webel (1900 – 2000) grew up in the DC area
 - ✓ Skilled draftsman; 1926 bachelor's and master's from Harvard in landscape architecture
- Landscape architecture firm formed in 1931
 - ✓ Began by designing private estates in Long Island, NY
 - ✓ Noted for strong formal geometric shapes, European influenced designs and installing mature plant specimens



Hillwood Long Island 1924



GARDEN
 FOR
 HILLWOOD

NOTON · D · C · SCALE · 1/8" = 1'-0"

Archd. C. B. Ault
 UMBERTO INNOCENTI · RICHARD S. WESS
 LANDSCAPE ARCHITECTS
 57th STREET, ROCKY HILL, CONNECTICUT



French Parterre late 1960's



French Parterre late 1960's

Historical Connection

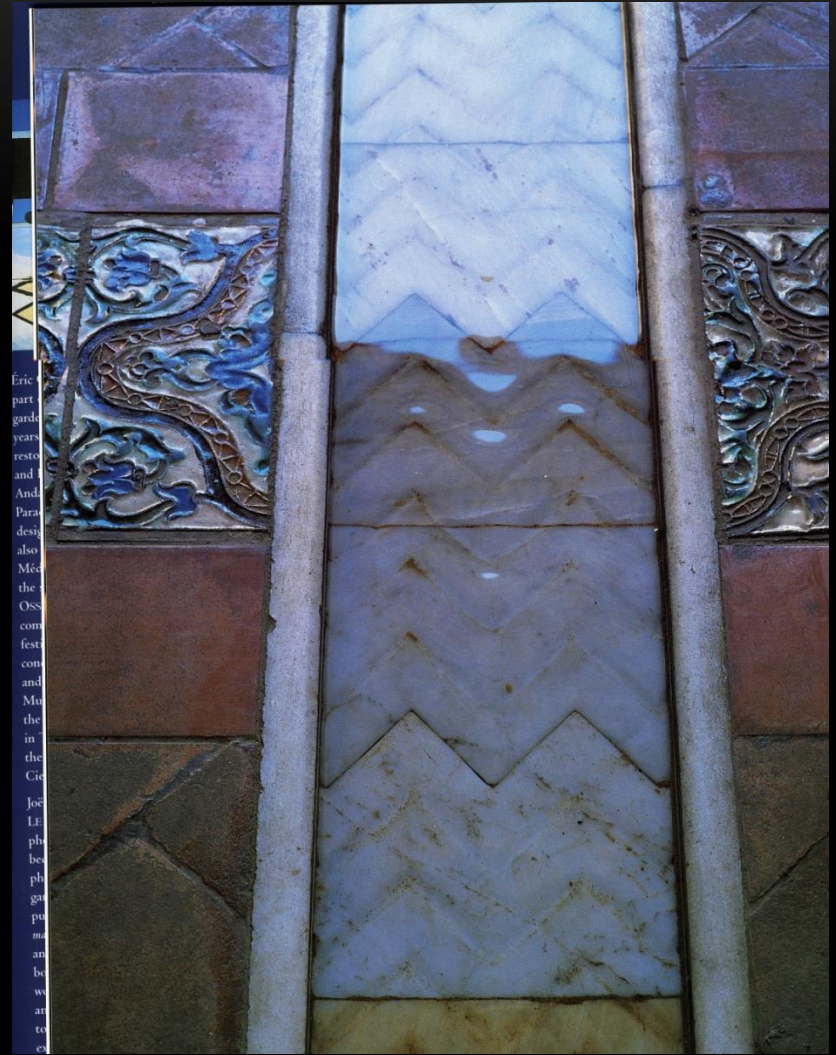


The Château Gardens in Villandry, France

Historical Connection



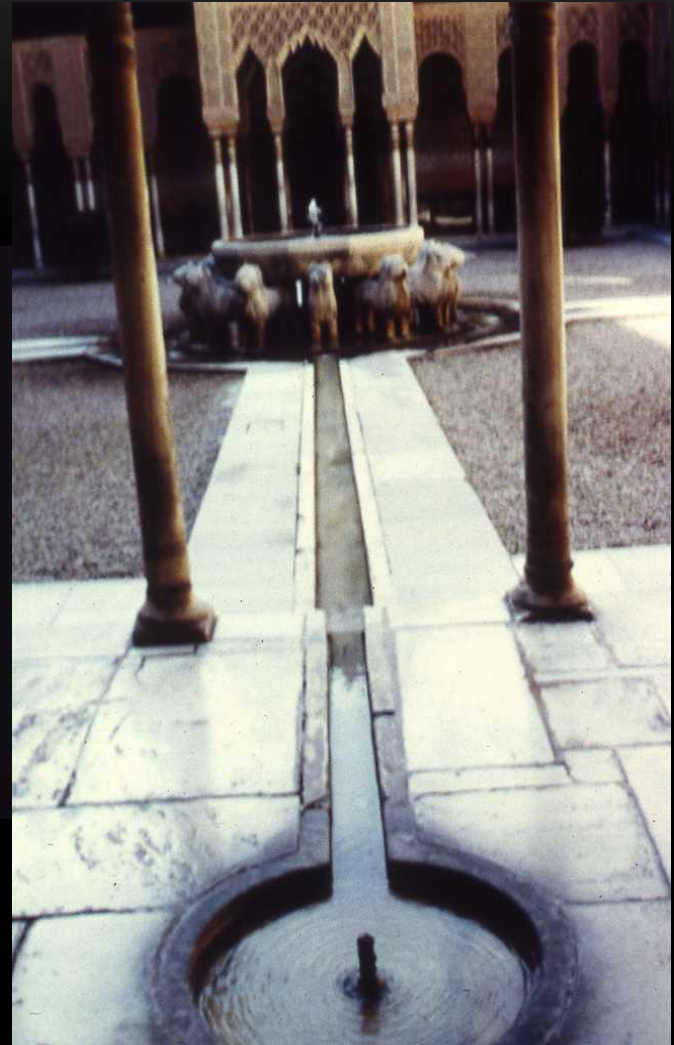
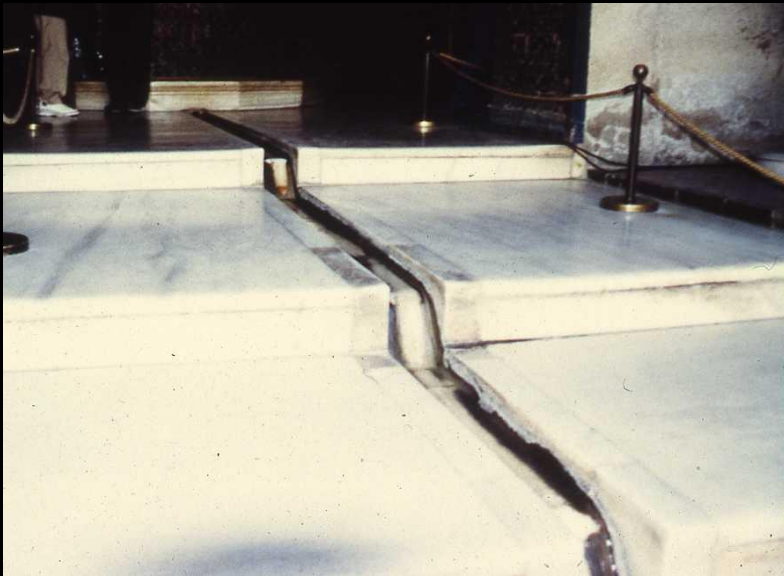
Hillwood Estate Museum and Gardens



Alcazar Gardens in Spain

Historical Connection

Spain's Alhambra Gardens



The Court of the Lions

Mansion Connection



Mansion Connection



Features of the French Parterre

Statuary:

- Common Themes
- Swan Fountain
- Lamps
- Marble Sphinxes
- Terra Cotta Sphinxes
- Urns
- Tables
- Putto Fountain
- Frog Fountain
- Diana

Features of the French Parterre

Plants:

- Boxwood
- English ivy
- Southern magnolia
- Variegated euonymous
- Japanese maple

Common Statuary Themes

- Putti- small children representing nature or angelic spirits often playful or mischievous
- Sphinxes- Egyptian and Greek mythology
- Pinecones- Symbolized immortality to the Romans
- Moons- Symbol of fertility and chastity
- Dolphins- Represent morality, honor, and a link between life and death



Statuary



Swan Fountain



Original
Terra Cotta Swan
Fountain 1957

Replaced in
1960's with
Kasota
limestone





New Fountain of Tennessee Marble circa 1999

Statuary



Lamps

Statuary



Marble Sphinxes

Statuary



Statuary



Terracotta Sphinxes
Outside parterre

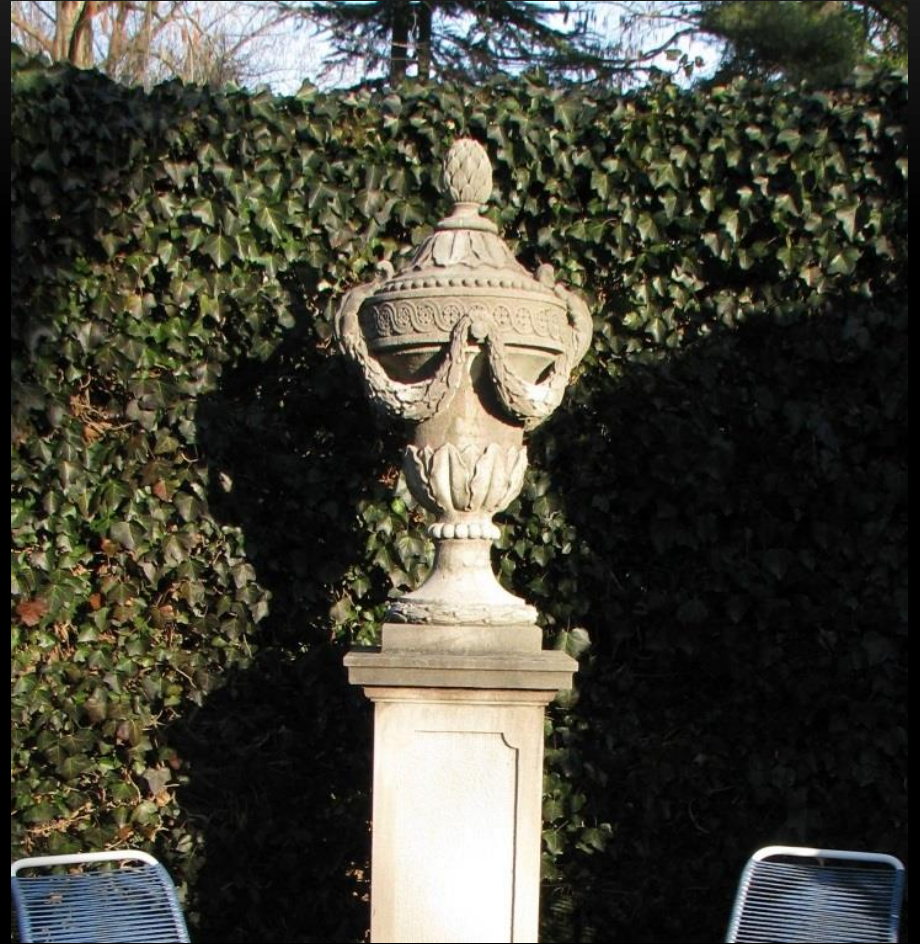
Statuary



Urns



Statuary



Urns

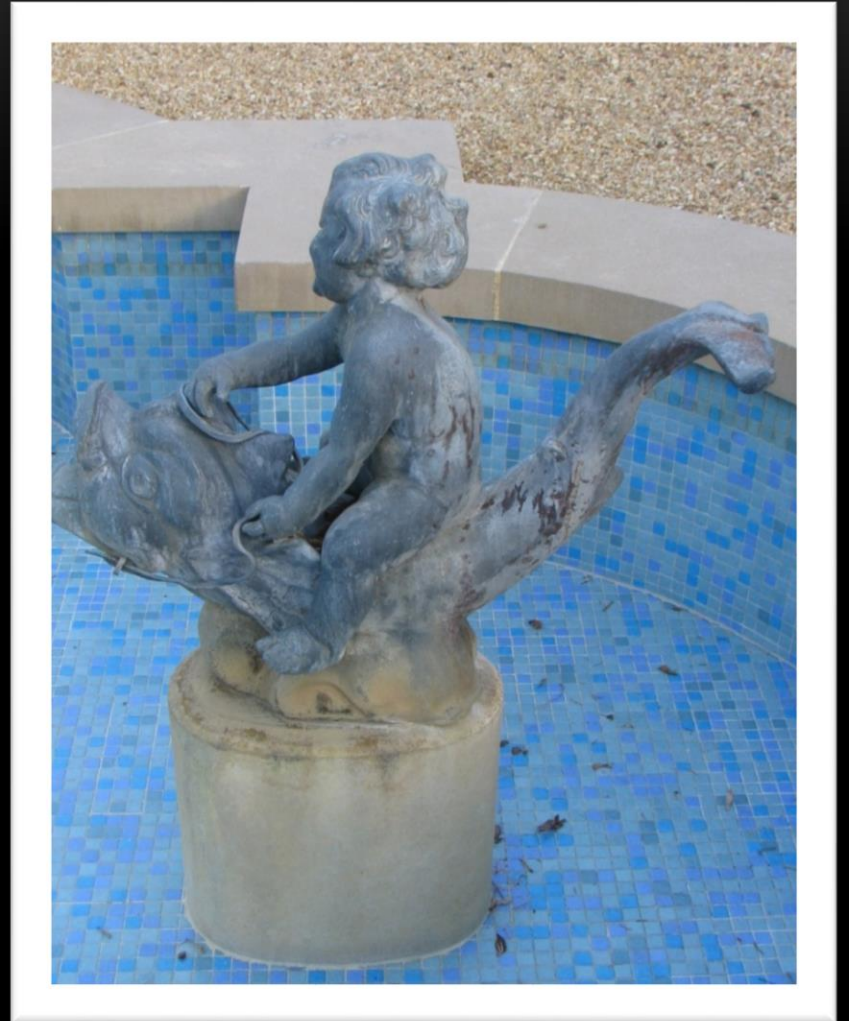
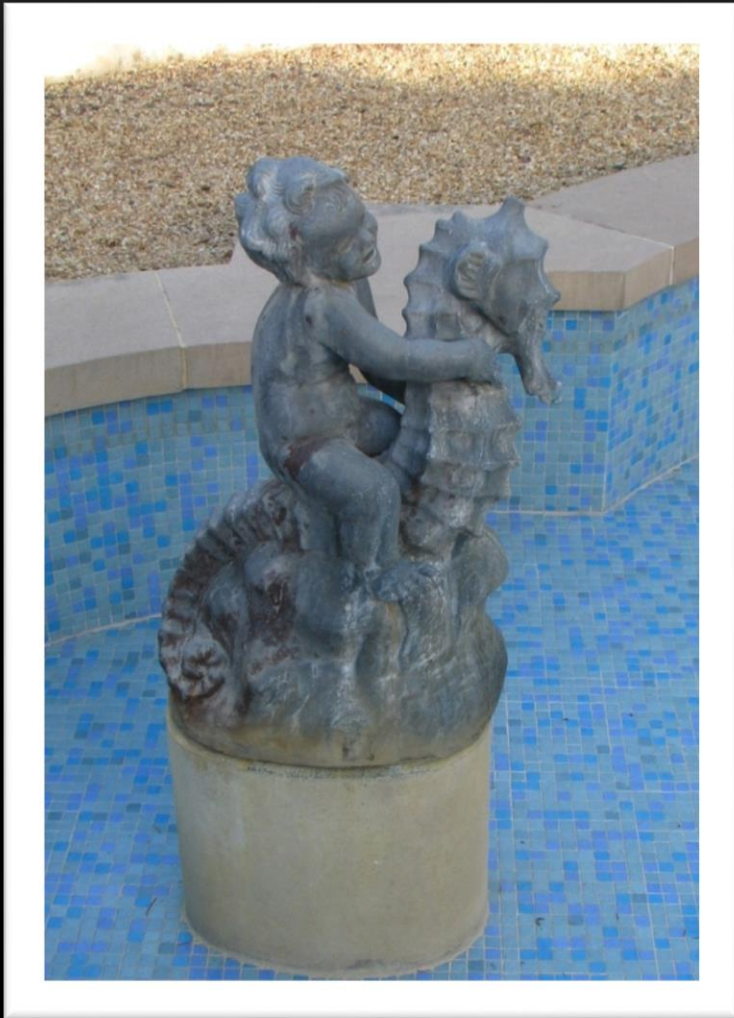
Furniture



Tables



Statuary



Putto Fountain

Statuary



Frog Fountain

Statuary



Diana the Huntress



Based on a marble statue by
Antoine Coysevox of Marie
Adelaïde de Savoy, Dutchess
of Bourgogne

Plants



Boxwood
'Morris Dwarf'

Boxwood
'Golden Dream'

Plants



English Ivy

Plants



Southern
Magnolia



Variegated
Euonymous

Plants



Japanese Maple

Marjorie Merriweather Post in the French Parterre



French Parterre 1963

Today's Use of the French Parterre



Tours, French Festival
and special events



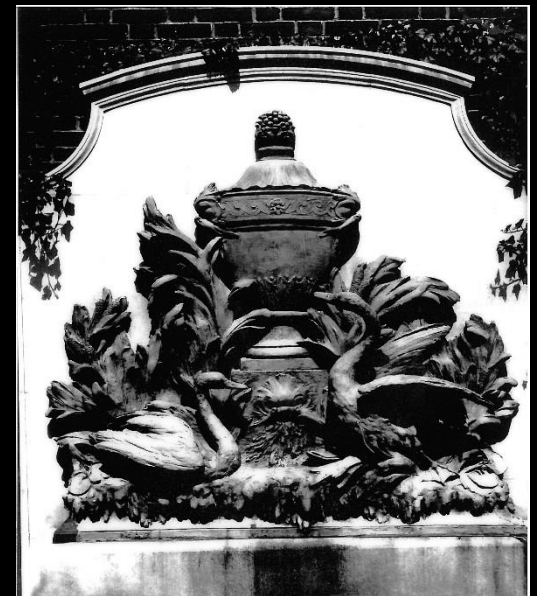
Investment

The early 1960's

- Glass tile in pools
- Marble sphinx in, Terra-cotta sphinx out
- Swan Fountain replica is carved
 - Vincent Tonelli is commissioned to carve a replacement in Kasota limestone

Changes after 1973

- White Marble chips in walkways
- Different species of boxwood
- Ceramic Tile in pools





The Big Renovation from 1997-2000



2012 Fountain Repair





2013 Boxwood Replacement

Maintenance

Garden Beds

- Continuous weeding
- Pruning
 - Boxwood- sheared once in June, hand pruned from July to November)
 - English ivy- 4x
 - Everything else- 1 to 2x (including espalier)
- Three seasonal change outs (bulbs/spring annuals, summer annuals, and mums)

Maintenance

Cleaning and Caretaking
the objects



Fountain System



Maintenance

Fountain system

- Retiling in March
- Running for start of April tours
- Skim pools everyday (April through December)
- Add 1 gallon of bleach every other day
- Clean pump filter as needed
- Clean the fountains as needed
- Close it down after December's Russian Winter Festival



THANK YOU FOR COMING!

MOTOR COURT AND FRENCH PARTERRE

HILLWOOD
ESTATE, MUSEUM, & GARDENS